

Musashi 1 Rabbit mAb

Catalog No: #58671

Package Size: #58671-1 50ul #58671-2 100ul

Orders: order@signalwayantibody.com

Support: tech@signalwayantibody.com

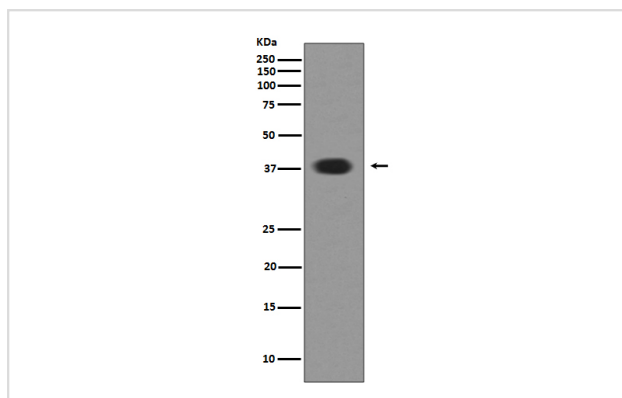
Description

Product Name	Musashi 1 Rabbit mAb
Host Species	Rabbit
Clonality	Monoclonal
Isotype	Rabbit IgG
Purification	Affinity-chromatography
Applications	WB IHC ICC/IF IP FC
Species Reactivity	Human
Specificity	Musashi 1 / Msi1 Antibody detects endogenous levels of total Musashi 1 / Msi1
Immunogen Description	A synthesized peptide derived from human Musashi 1 / Msi1
Other Names	RNA-binding protein Musashi homolog 1; Musashi-1; MS11;
Accession No.	Uniprot:O43347
Uniprot	O43347
Formulation	Rabbit IgG in phosphate buffered saline , pH 7.4, 150mM NaCl, 0.02% sodium azide and 50% glycerol.
Storage	Store at +4°C short term. Store at -20°C long term. Avoid freeze / thaw cycle.

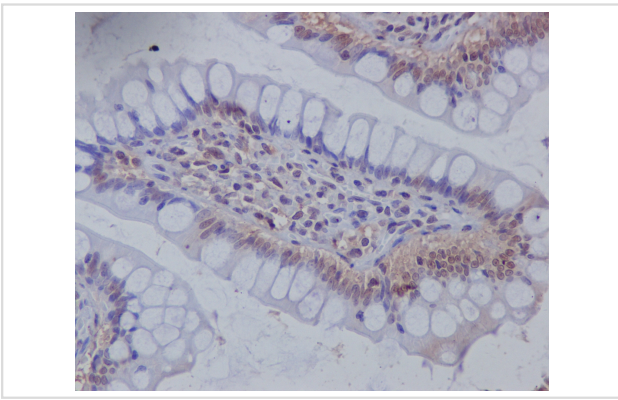
Application Details

WB 1:1000~1:2000 IHC 1:50~1:200 ICC/IF 1:50~1:200 IP 1:50 FC 1:50

Images



Western blot analysis of Musashi 1 expression in SH-SY-5Y cell lysate.



Immunohistochemical analysis of paraffin-embedded human colon, using Musashi 1 Antibody .

Product Description

Regulates expression of the NOTCH1 antagonist NUMB. Binds RNA containing the sequence 5'-GUUAGUUAGUUAGUU-3' and other sequences containing the pattern 5'-[GA]U1-3AGU-3'. May play a role in the proliferation and maintenance of stem cells in the central nervous system.

Background

Regulates expression of the NOTCH1 antagonist NUMB. Binds RNA containing the sequence 5'-GUUAGUUAGUUAGUU-3' and other sequences containing the pattern 5'-[GA]U1-3AGU-3'. May play a role in the proliferation and maintenance of stem cells in the central nervous system.

Note: This product is for in vitro research use only