

Notch1 Rabbit mAb

Catalog No: #58674

Package Size: #58674-1 50ul #58674-2 100ul

Orders: order@signalwayantibody.comSupport: tech@signalwayantibody.com

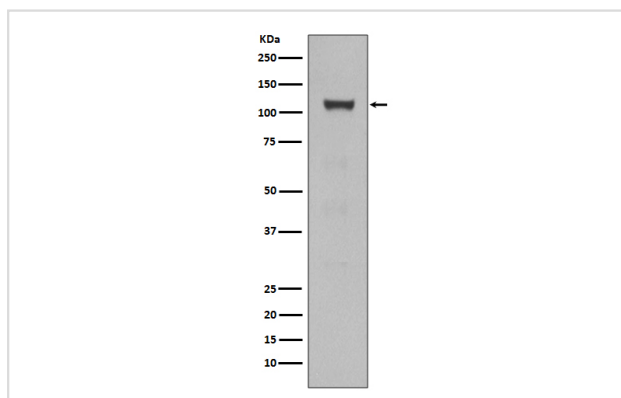
Description

Product Name	Notch1 Rabbit mAb
Host Species	Rabbit
Clonality	Monoclonal
Isotype	Rabbit IgG
Purification	Affinity-chromatography
Applications	WB IHC ICC/IF FC
Species Reactivity	Human Mouse
Specificity	Notch1 Antibody detects endogenous levels of total Notch1
Immunogen Description	A synthesized peptide derived from human Notch1
Other Names	NOTC1, NOTCH1, TAN1, hN1, neurogenic locus notch homolog protein 1, neurogenic locus notch homolog protein 1 precursor,
Accession No.	Uniprot:P46531
Uniprot	P46531
Formulation	Rabbit IgG in phosphate buffered saline , pH 7.4, 150mM NaCl, 0.02% sodium azide and 50% glycerol.
Storage	Store at +4°C short term. Store at -20°C long term. Avoid freeze / thaw cycle.

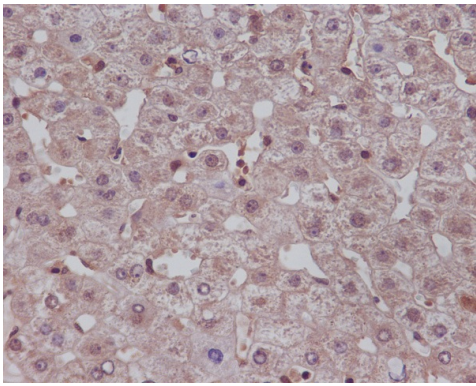
Application Details

WB 1:500~1:3000 IHC 1:50~1:200 ICC/IF 1:100~1:500 FC 1:200~1:500

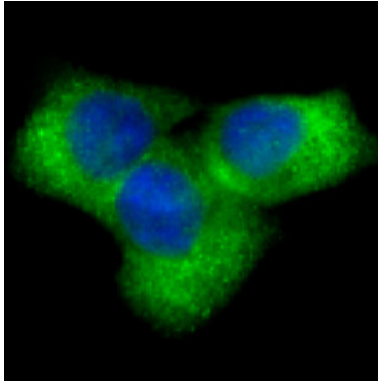
Images



Western blot analysis of NOTCH1 expression in HEK293 cell lysate.



Immunohistochemical analysis of paraffin-embedded human liver, using Notch1 Antibody .



Immunofluorescent analysis of HeLa cells, using Notch1 Antibody .

Product Description

Functions as a receptor for membrane-bound ligands Jagged1, Jagged2 and Delta1 to regulate cell-fate determination. Upon ligand activation through the released notch intracellular domain (NICD) it forms a transcriptional activator complex with RBPJ/RBPSUH and activates genes of the enhancer of split locus. Affects the implementation of differentiation, proliferation and apoptotic programs. Involved in angiogenesis; negatively regulates endothelial cell proliferation and migration and angiogenic sprouting.

Background

Functions as a receptor for membrane-bound ligands Jagged1, Jagged2 and Delta1 to regulate cell-fate determination. Upon ligand activation through the released notch intracellular domain (NICD) it forms a transcriptional activator complex with RBPJ/RBPSUH and activates genes of the enhancer of split locus. Affects the implementation of differentiation, proliferation and apoptotic programs. Involved in angiogenesis; negatively regulates endothelial cell proliferation and migration and angiogenic sprouting.

Note: This product is for in vitro research use only