

## Synaptophysin Rabbit mAb

Catalog No: #58675

Package Size: #58675-1 50ul #58675-2 100ul

Orders: order@signalwayantibody.com

Support: tech@signalwayantibody.com

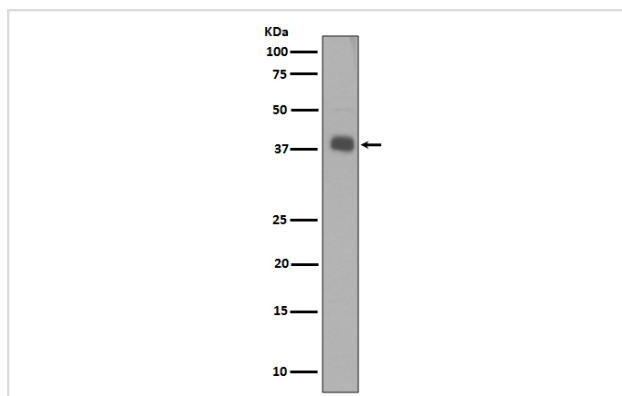
## Description

Product Name	Synaptophysin Rabbit mAb
Host Species	Rabbit
Clonality	Monoclonal
Isotype	Rabbit IgG
Purification	Affinity-chromatography
Applications	WB IHC ICC/IF
Species Reactivity	Human Mouse Rat
Specificity	Synaptophysin Antibody detects endogenous levels of total Synaptophysin
Immunogen Description	A synthesized peptide derived from human Synaptophysin
Other Names	Major synaptic vesicle protein p38; MRXSYP; Synaptophysin; SYP; SYPH
Accession No.	Uniprot:P08247
Uniprot	P08247
Formulation	Rabbit IgG in phosphate buffered saline , pH 7.4, 150mM NaCl, 0.02% sodium azide and 50% glycerol.
Storage	Store at +4°C short term. Store at -20°C long term. Avoid freeze / thaw cycle.

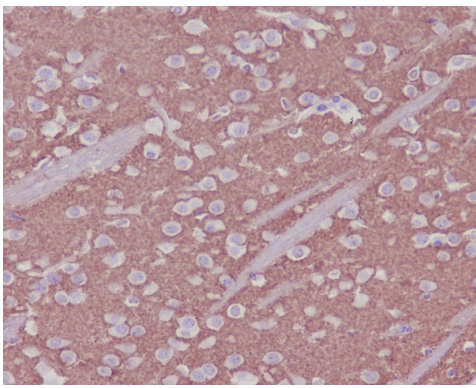
## Application Details

WB 1:5000~1:10000 IHC 1:50~1:200 ICC/IF 1:50~1:200

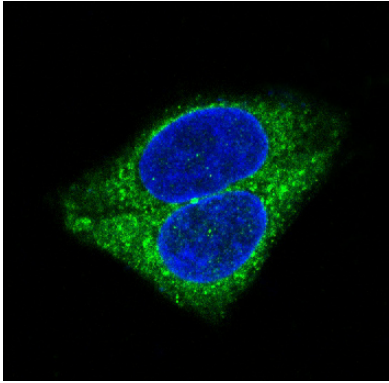
## Images



Western blot analysis of Synaptophysin expression in SH-SY5Y cell lysate.



Immunohistochemical analysis of paraffin-embedded mouse brain, using Synaptophysin Antibody .



Immunofluorescent analysis of PC-12 cells, using Synaptophysin Antibody .

## Product Description

SYP Possibly involved in structural functions as organizing other membrane components or in targeting the vesicles to the plasma membrane. Involved in the regulation of short-term and long-term synaptic plasticity. Belongs to the synaptophysin/synaptobrevin family. Homohexamer or homotetramer. Note: This description may include information from UniProtKB.

## Background

SYP Possibly involved in structural functions as organizing other membrane components or in targeting the vesicles to the plasma membrane. Involved in the regulation of short-term and long-term synaptic plasticity. Belongs to the synaptophysin/synaptobrevin family. Homohexamer or homotetramer. Note: This description may include information from UniProtKB.

Note: This product is for in vitro research use only