

ErbB3 (HER3) Rabbit mAb

Catalog No: #58688

Package Size: #58688-1 50ul #58688-2 100ul

Orders: order@signalwayantibody.com

Support: tech@signalwayantibody.com

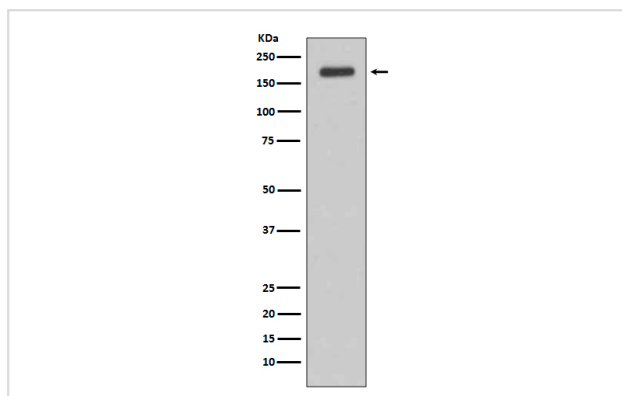
Description

Product Name	ErbB3 (HER3) Rabbit mAb
Host Species	Rabbit
Clonality	Monoclonal
Isotype	Rabbit IgG
Purification	Affinity-chromatography
Applications	WB IP
Species Reactivity	Human Rat
Specificity	ErbB3 (HER3) Antibody detects endogenous levels of total ErbB3 (HER3)
Immunogen Description	A synthesized peptide derived from human ErbB3 (HER3)
Other Names	ERB3, ERBB3, HER3, c-erbB3, kinase ErbB3
Accession No.	Uniprot:P21860
Uniprot	P21860
Formulation	Rabbit IgG in phosphate buffered saline , pH 7.4, 150mM NaCl, 0.02% sodium azide and 50% glycerol.
Storage	Store at +4°C short term. Store at -20°C long term. Avoid freeze / thaw cycle.

Application Details

WB 1:500~1:2000 IP 1:30

Images



Western blot analysis of ErbB3 (HER3) expression in MCF-7 cell lysate.

Product Description

This membrane-bound protein has a neuregulin binding domain but not an active kinase domain. It therefore can bind this ligand but not convey the signal into the cell through protein phosphorylation. However, it does form heterodimers with other EGF receptor family members which do have kinase activity. Heterodimerization leads to the activation of pathways which lead to cell proliferation or differentiation.

Background

This membrane-bound protein has a neuregulin binding domain but not an active kinase domain. It therefore can bind this ligand but not convey the signal into the cell through protein phosphorylation. However, it does form heterodimers with other EGF receptor family members which do have kinase activity. Heterodimerization leads to the activation of pathways which lead to cell proliferation or differentiation.

Note: This product is for in vitro research use only