

## Paxillin Rabbit mAb

Catalog No: #58691

Package Size: #58691-1 50ul #58691-2 100ul

Orders: order@signalwayantibody.com

Support: tech@signalwayantibody.com

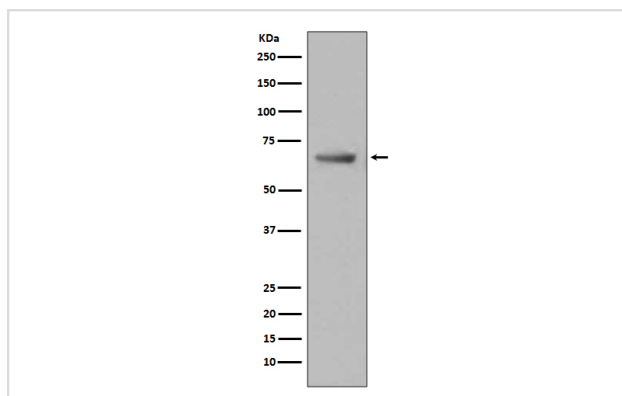
## Description

Product Name	Paxillin Rabbit mAb
Host Species	Rabbit
Clonality	Monoclonal
Isotype	Rabbit IgG
Purification	Affinity-chromatography
Applications	WB IHC ICC/IF IP
Species Reactivity	Human Mouse Rat
Specificity	Paxillin Antibody detects endogenous levels of total Paxillin
Immunogen Description	A synthesized peptide derived from human Paxillin
Other Names	Paired box protein Pax-1; PAX-1; PAXI; paxillin; paxillin alpha;
Accession No.	Uniprot:P49023
Uniprot	P49023
Formulation	Rabbit IgG in phosphate buffered saline , pH 7.4, 150mM NaCl, 0.02% sodium azide and 50% glycerol.
Storage	Store at +4°C short term. Store at -20°C long term. Avoid freeze / thaw cycle.

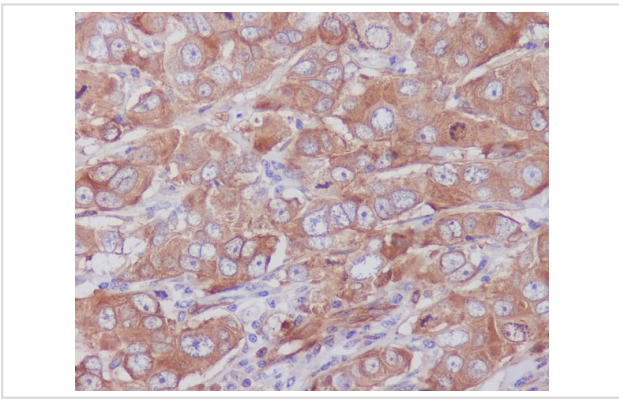
## Application Details

WB 1:500~1:1000 IHC 1:50~1:100 ICC/IF 1:50~1:100 IP 1:50

## Images



Western blot analysis of Paxillin expression in HeLa cell lysate.



Immunohistochemical analysis of paraffin-embedded human breast carcinoma, using Paxillin Antibody.

## Product Description

Cytoskeletal protein involved in actin-membrane attachment at sites of cell adhesion to the extracellular matrix (focal adhesion). PXN is a multi-domain cytoskeletal protein that localizes primarily to focal adhesion sites to the extracellular matrix. Phosphorylated by focal adhesion kinase (FAK) and is a component of integrin signaling. Its phosphorylation provides docking sites for recruitment of signaling molecules to focal adhesions.

## Background

Cytoskeletal protein involved in actin-membrane attachment at sites of cell adhesion to the extracellular matrix (focal adhesion). PXN is a multi-domain cytoskeletal protein that localizes primarily to focal adhesion sites to the extracellular matrix. Phosphorylated by focal adhesion kinase (FAK) and is a component of integrin signaling. Its phosphorylation provides docking sites for recruitment of signaling molecules to focal adhesions.

Note: This product is for in vitro research use only