

## TTF1 Rabbit mAb

Catalog No: #58692

Package Size: #58692-1 50ul #58692-2 100ul

Orders: order@signalwayantibody.com

Support: tech@signalwayantibody.com

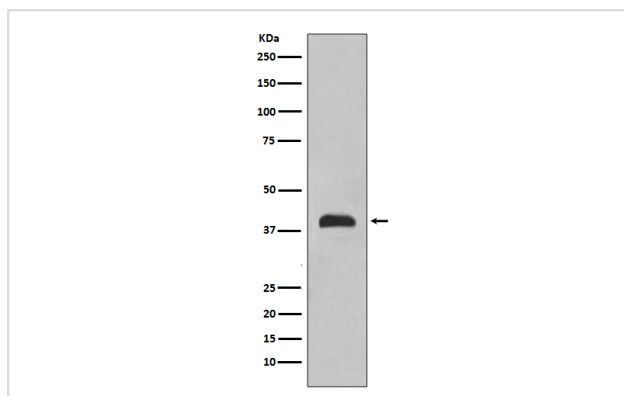
## Description

Product Name	TTF1 Rabbit mAb
Host Species	Rabbit
Clonality	Monoclonal
Isotype	Rabbit IgG
Purification	Affinity-chromatography
Applications	WB IHC ICC/IF FC
Species Reactivity	Human Mouse Rat
Specificity	TTF1 Antibody detects endogenous levels of total TTF1
Immunogen Description	A synthesized peptide derived from human TTF1
Other Names	BCH; BHC; NK-2; TEBP; TTF1; NKX2A; TITF1; TTF-1; NKX2.1;
Accession No.	Uniprot:P43699
Uniprot	P43699
Formulation	Rabbit IgG in phosphate buffered saline , pH 7.4, 150mM NaCl, 0.02% sodium azide and 50% glycerol.
Storage	Store at +4°C short term. Store at -20°C long term. Avoid freeze / thaw cycle.

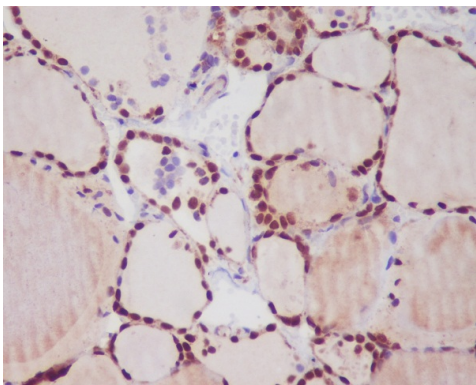
## Application Details

WB 1:500~1:2000 IHC 1:50~1:200 ICC/IF 1:50~1:200 FC 1:50

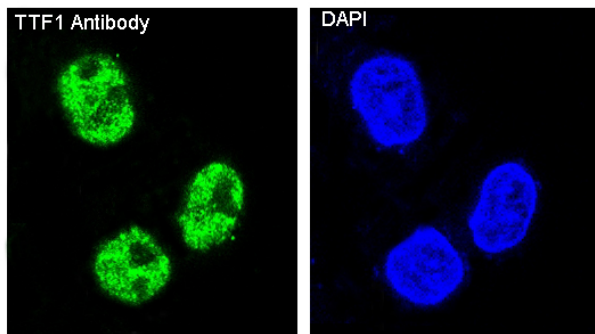
## Images



Western blot analysis of TTF1 expression in 293 cell lysate.



Immunohistochemical analysis of paraffin-embedded human thyroid, using TTF1 Antibody.



Immunofluorescent analysis of HeLa cells, using TTF1 Antibody .

## Product Description

This gene encodes a protein initially identified as a thyroid-specific transcription factor. The encoded protein binds to the thyroglobulin promoter and regulates the expression of thyroid-specific genes but has also been shown to regulate the expression of genes involved in morphogenesis. Mutations and deletions in this gene are associated with benign hereditary chorea, choreoathetosis, congenital hypothyroidism, and neonatal respiratory distress, and may be associated with thyroid cancer.

## Background

This gene encodes a protein initially identified as a thyroid-specific transcription factor. The encoded protein binds to the thyroglobulin promoter and regulates the expression of thyroid-specific genes but has also been shown to regulate the expression of genes involved in morphogenesis. Mutations and deletions in this gene are associated with benign hereditary chorea, choreoathetosis, congenital hypothyroidism, and neonatal respiratory distress, and may be associated with thyroid cancer.

Note: This product is for in vitro research use only