

CD3 epsilon Rabbit mAb

Catalog No: #58696

Package Size: #58696-1 50ul #58696-2 100ul

Orders: order@signalwayantibody.com

Support: tech@signalwayantibody.com

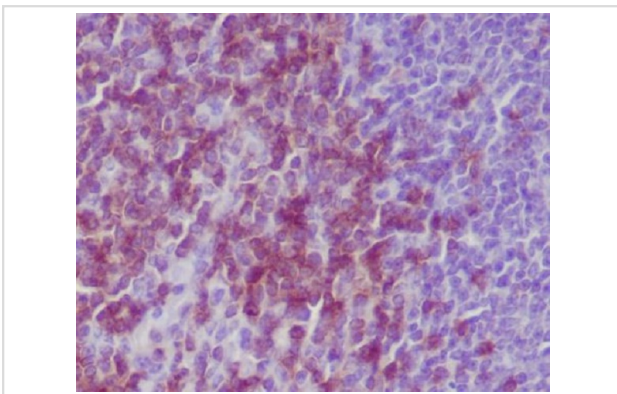
Description

Product Name	CD3 epsilon Rabbit mAb
Host Species	Rabbit
Clonality	Monoclonal
Isotype	Rabbit IgG
Purification	Affinity-chromatography
Applications	IHC ICC/IF IP
Species Reactivity	Human
Specificity	CD3 epsilon Antibody detects endogenous levels of total CD3 epsilon
Immunogen Description	A synthesized peptide derived from human CD3 epsilon
Other Names	CD3ε; FLJ18683; T3E; TCRE;
Accession No.	Uniprot:P07766
Uniprot	P07766
Formulation	Rabbit IgG in phosphate buffered saline , pH 7.4, 150mM NaCl, 0.02% sodium azide and 50% glycerol.
Storage	Store at +4°C short term. Store at -20°C long term. Avoid freeze / thaw cycle.

Application Details

IHC 1:50~1:200 ICC/IF 1:50~1:200 IP 1:50

Images



Immunohistochemical analysis of paraffin-embedded mouse spleen, using CD3 epsilon Antibody.

Product Description

The CD3 complex mediates signal transduction. When T cells encounter antigens via the T cell receptor (TCR), information about the quantity and quality of antigens is relayed to the intracellular signal transduction machinery . This activation process depends mainly on CD3 (Cluster of Differentiation 3), a multiunit protein complex that directly associates with the TCR. CD3 is composed of four polypeptides: ζ, γ, ε and δ.

Background

The CD3 complex mediates signal transduction. When T cells encounter antigens via the T cell receptor (TCR), information about the quantity and quality of antigens is relayed to the intracellular signal transduction machinery. This activation process depends mainly on CD3 (Cluster of Differentiation 3), a multiunit protein complex that directly associates with the TCR. CD3 is composed of four polypeptides: ζ , γ , ϵ and δ .

Note: This product is for in vitro research use only