

Smad1 Rabbit mAb

Catalog No: #58704

Package Size: #58704-1 50ul #58704-2 100ul

Orders: order@signalwayantibody.com

Support: tech@signalwayantibody.com

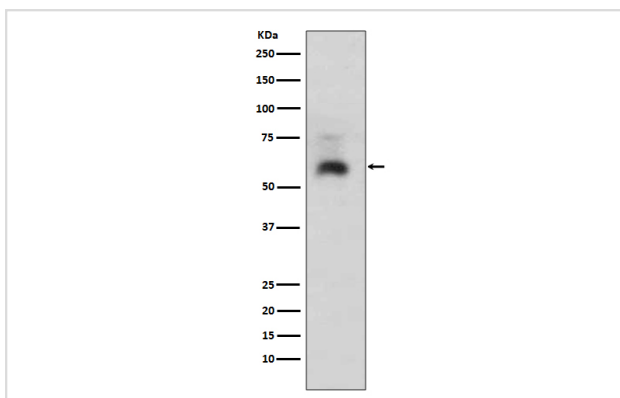
Description

Product Name	Smad1 Rabbit mAb
Host Species	Rabbit
Clonality	Monoclonal
Isotype	Rabbit IgG
Purification	Affinity-chromatography
Applications	WB ICC/IF
Species Reactivity	Human Mouse
Specificity	Smad1 Antibody detects endogenous levels of total Smad1
Immunogen Description	A synthesized peptide derived from human Smad1
Other Names	BSP-1; BSP1; Dwarf1-A; Dwf-A; JV4-1; MADH1; MADR1; Mad-related protein 1; Mad1; SMAD1; Smad1;
Accession No.	Uniprot:Q15797
Uniprot	Q15797
Formulation	Rabbit IgG in phosphate buffered saline , pH 7.4, 150mM NaCl, 0.02% sodium azide and 50% glycerol.
Storage	Store at +4°C short term. Store at -20°C long term. Avoid freeze / thaw cycle.

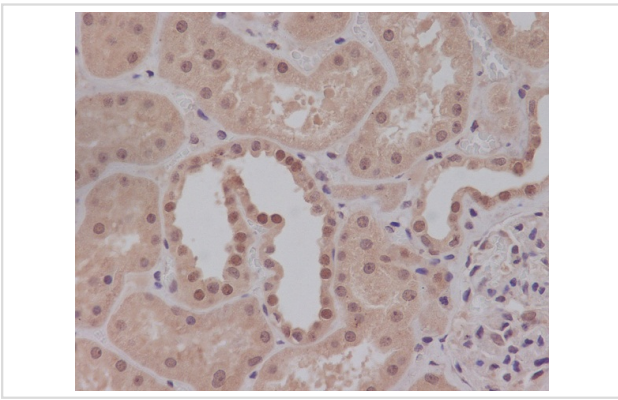
Application Details

WB 1:500~1:2000 ICC/IF 1:50~1:200

Images



Western blot analysis of Smad1 expression in HeLa cell lysate.



Immunohistochemical analysis of paraffin-embedded human kidney, using Smad1 Antibody.

Product Description

Transcriptional modulator activated by BMP (bone morphogenetic proteins) type 1 receptor kinase. SMAD1 is a receptor-regulated SMAD (R-SMAD). SMAD1/OAZ1/PSMB4 complex mediates the degradation of the CREBBP/EP300 repressor SNIP1. May act synergistically with SMAD4 and YY1 in bone morphogenetic protein (BMP)-mediated cardiac-specific gene expression.

Background

Transcriptional modulator activated by BMP (bone morphogenetic proteins) type 1 receptor kinase. SMAD1 is a receptor-regulated SMAD (R-SMAD). SMAD1/OAZ1/PSMB4 complex mediates the degradation of the CREBBP/EP300 repressor SNIP1. May act synergistically with SMAD4 and YY1 in bone morphogenetic protein (BMP)-mediated cardiac-specific gene expression.

Note: This product is for in vitro research use only