

alpha smooth muscle Actin Rabbit mAb

Catalog No: #58705

Package Size: #58705-1 50ul #58705-2 100ul

Orders: order@signalwayantibody.com

Support: tech@signalwayantibody.com

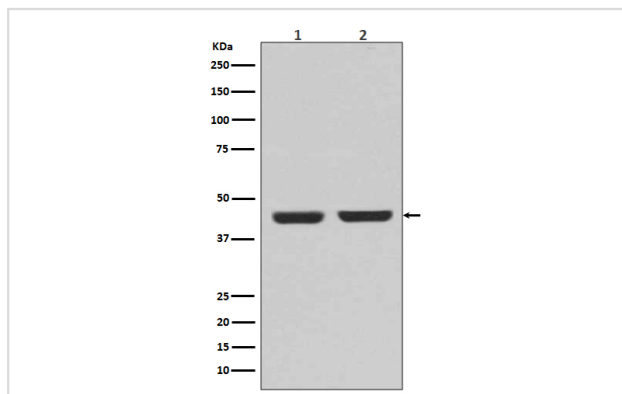
Description

Product Name	alpha smooth muscle Actin Rabbit mAb
Host Species	Rabbit
Clonality	Monoclonal
Isotype	Rabbit IgG
Purification	Affinity-chromatography
Applications	WB IHC ICC/IF FC
Species Reactivity	Human Mouse Rat
Specificity	alpha smooth muscle Actin Antibody detects endogenous levels of total alpha smooth muscle Actin
Immunogen Description	A synthesized peptide derived from human alpha smooth muscle Actin
Other Names	Actin; aortic smooth muscle; Alpha-actin-2; Cell growth-inhibiting gene 46 protein; ACTA2; ACTSA; ACTVS; GIG46;
Accession No.	Uniprot:P68032/P62736/P63267
Uniprot	P68032/P62736/P63267
Calculated MW	42kDa
Formulation	Rabbit IgG in phosphate buffered saline , pH 7.4, 150mM NaCl, 0.02% sodium azide and 50% glycerol.
Storage	Store at +4°C short term. Store at -20°C long term. Avoid freeze / thaw cycle.

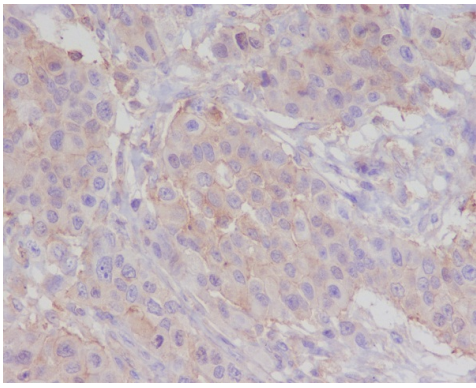
Application Details

WB 1:1000~1:5000 IHC 1:100~1:500 ICC/IF 1:100~1:500 FC 1:30

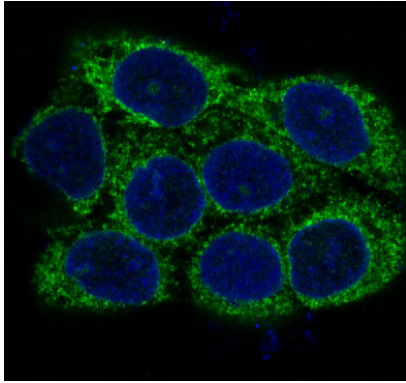
Images



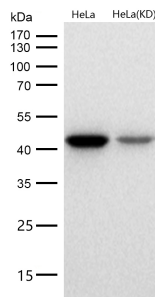
Western blot analysis on (1)A431 cell lysate; (2)C6 cell lysate using alpha-SMA antibody.



Immunohistochemical analysis of paraffin-embedded human breast carcinoma, using alpha smooth muscle Actin Antibody.



Immunofluorescent analysis of A431 cells, using alpha smooth muscle Actin Antibody.



All lanes use the Antibody at 1:2K dilution for 1 hour at room temperature.

Product Description

Component of intercellular desmosome junctions. Involved in the interaction of plaque proteins and intermediate filaments mediating cell-cell adhesion.

Background

Component of intercellular desmosome junctions. Involved in the interaction of plaque proteins and intermediate filaments mediating cell-cell adhesion.

Note: This product is for in vitro research use only