

DNAJC15 Rabbit mAb

Catalog No: #58707

Package Size: #58707-1 50ul #58707-2 100ul

Orders: order@signalwayantibody.com

Support: tech@signalwayantibody.com

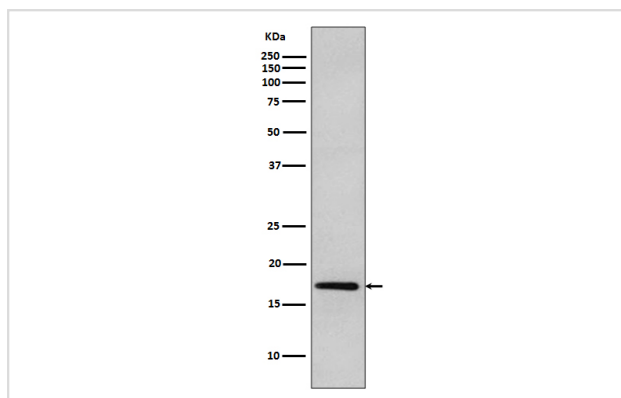
Description

Product Name	DNAJC15 Rabbit mAb
Host Species	Rabbit
Clonality	Monoclonal
Isotype	Rabbit IgG
Purification	Affinity-chromatography
Applications	WB IHC
Species Reactivity	Human Mouse Rat
Specificity	DNAJC15 Antibody detects endogenous levels of total DNAJC15
Immunogen Description	A synthesized peptide derived from human DNAJC15
Other Names	HSD18; MCJ; Methylation controlled J protein; DNAJC15; DNAJD1; GIG22; DJC1
Accession No.	Uniprot:Q9Y5T4
Uniprot	Q9Y5T4
Formulation	Rabbit IgG in phosphate buffered saline , pH 7.4, 150mM NaCl, 0.02% sodium azide and 50% glycerol.
Storage	Store at +4°C short term. Store at -20°C long term. Avoid freeze / thaw cycle.

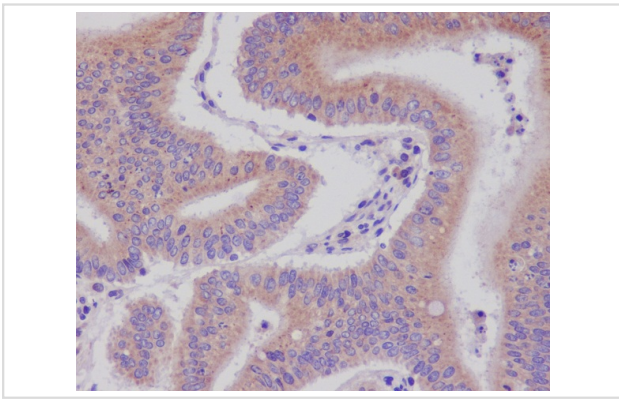
Application Details

WB 1:500~1:2000 IHC 1:50~1:200

Images



Western blot analysis of DNAJC15 expression in MCF-7 cell lysate.



Immunohistochemical analysis of paraffin-embedded human colon carcinoma, using DNAJC15 Antibody.

Product Description

Negative regulator of the mitochondrial respiratory chain. Prevents mitochondrial hyperpolarization state and restricts mitochondrial generation of ATP (By similarity). Acts as an import component of the TIM23 translocase complex. Stimulates the ATPase activity of HSPA9.

Background

Negative regulator of the mitochondrial respiratory chain. Prevents mitochondrial hyperpolarization state and restricts mitochondrial generation of ATP (By similarity). Acts as an import component of the TIM23 translocase complex. Stimulates the ATPase activity of HSPA9.

Note: This product is for in vitro research use only