

Bim Rabbit mAb

Catalog No: #58709

Package Size: #58709-1 50ul #58709-2 100ul

Orders: order@signalwayantibody.com

Support: tech@signalwayantibody.com

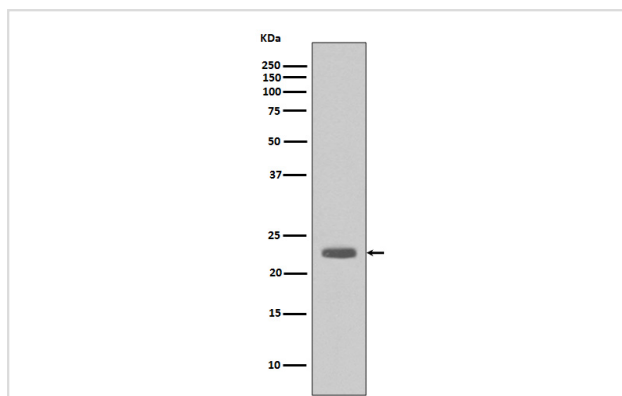
Description

Product Name	Bim Rabbit mAb
Host Species	Rabbit
Clonality	Monoclonal
Isotype	Rabbit IgG
Purification	Affinity-chromatography
Applications	WB IHC ICC/IF IP FC
Species Reactivity	Human Mouse Rat
Specificity	Bim Antibody detects endogenous levels of total Bim
Immunogen Description	A synthesized peptide derived from human Bim
Other Names	BAM; BIM; BOD; BimL; BimS; BimEL; BIM-beta6; BIM-beta7; BIM-alpha6;BCL2L11;
Accession No.	Uniprot:O43521
Uniprot	O43521
Formulation	Rabbit IgG in phosphate buffered saline , pH 7.4, 150mM NaCl, 0.02% sodium azide and 50% glycerol.
Storage	Store at +4°C short term. Store at -20°C long term. Avoid freeze / thaw cycle.

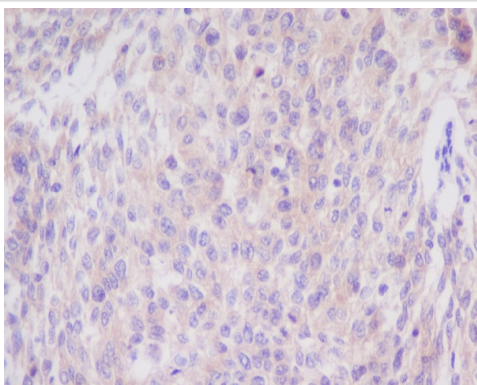
Application Details

WB 1:500~1:1000 IHC 1:50~1:100 ICC/IF 1:50~1:100 IP 1:40 FC 1:50

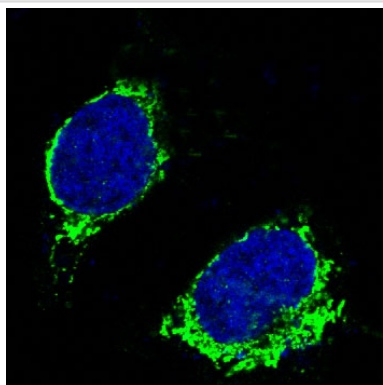
Images



Western blot analysis of Bim expression in A431 cell lysate.



Immunohistochemical analysis of paraffin-embedded human cervix cancer, using Bim Antibody.



Immunofluorescent analysis of Raji cells, using Bim Antibody.

Product Description

Bim a pro-apoptotic member of the BCL-2 protein family. Interacts with other members of the BCL-2 protein family, including BCL2, BCL2L1/BCL-X(L), and MCL1, and act as an apoptotic activator. Its expression can be induced by nerve growth factor (NGF), as well as by the forkhead transcription factor FKHR-L1, which suggests a role in neuronal and lymphocyte apoptosis.

Background

Bim a pro-apoptotic member of the BCL-2 protein family. Interacts with other members of the BCL-2 protein family, including BCL2, BCL2L1/BCL-X(L), and MCL1, and act as an apoptotic activator. Its expression can be induced by nerve growth factor (NGF), as well as by the forkhead transcription factor FKHR-L1, which suggests a role in neuronal and lymphocyte apoptosis.

Note: This product is for in vitro research use only