

KMT4 / Dot1L Rabbit mAb

Catalog No: #58710

Package Size: #58710-1 50ul #58710-2 100ul

Orders: order@signalwayantibody.com

Support: tech@signalwayantibody.com

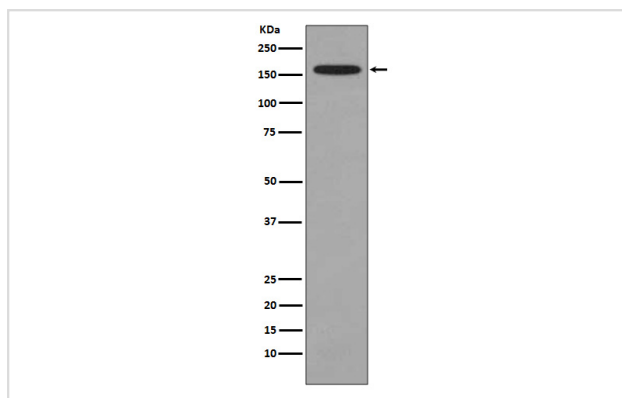
Description

Product Name	KMT4 / Dot1L Rabbit mAb
Host Species	Rabbit
Clonality	Monoclonal
Isotype	Rabbit IgG
Purification	Affinity-chromatography
Applications	WB
Species Reactivity	Human Mouse
Specificity	KMT4 / Dot1L Antibody detects endogenous levels of total KMT4 / Dot1L
Immunogen Description	A synthesized peptide derived from human KMT4 / Dot1L
Other Names	DOT 1; DOT1L; KMT4; Histone methyltransferase DOT1L; H3 lysine-79 specific;
Accession No.	Uniprot:Q8TEK3
Uniprot	Q8TEK3
Formulation	Rabbit IgG in phosphate buffered saline , pH 7.4, 150mM NaCl, 0.02% sodium azide and 50% glycerol.
Storage	Store at +4°C short term. Store at -20°C long term. Avoid freeze / thaw cycle.

Application Details

WB 1:500~1:3000

Images



Western blot analysis of KMT4/Dot1L expression in RAW264.7 cell lysate.

Product Description

Histone methyltransferase. Methylates 'Lys-79' of histone H3. Nucleosomes are preferred as substrate compared to free histones. Binds to DNA.

Background

Histone methyltransferase. Methylates 'Lys-79' of histone H3. Nucleosomes are preferred as substrate compared to free histones. Binds to DNA.

Note: This product is for in vitro research use only