

p16 ARC Rabbit mAb

Catalog No: #58716

Package Size: #58716-1 50ul #58716-2 100ul

Orders: order@signalwayantibody.comSupport: tech@signalwayantibody.com

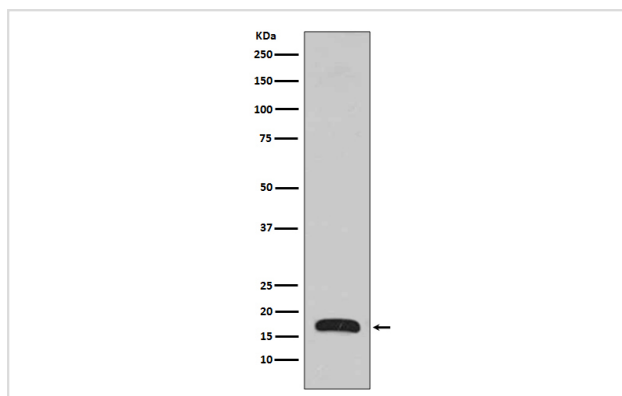
Description

Product Name	p16 ARC Rabbit mAb
Host Species	Rabbit
Clonality	Monoclonal
Isotype	Rabbit IgG
Purification	Affinity-chromatography
Applications	WB IHC ICC/IF IP FC
Species Reactivity	Human Mouse Rat
Specificity	p16 ARC Antibody detects endogenous levels of total p16 ARC
Immunogen Description	A synthesized peptide derived from human p16 ARC
Other Names	p16 Arc; ARPC5; ARC16; Arp2/3 protein complex subunit p16;
Accession No.	Uniprot:O15511
Uniprot	O15511
Formulation	Rabbit IgG in phosphate buffered saline , pH 7.4, 150mM NaCl, 0.02% sodium azide and 50% glycerol.
Storage	Store at +4°C short term. Store at -20°C long term. Avoid freeze / thaw cycle.

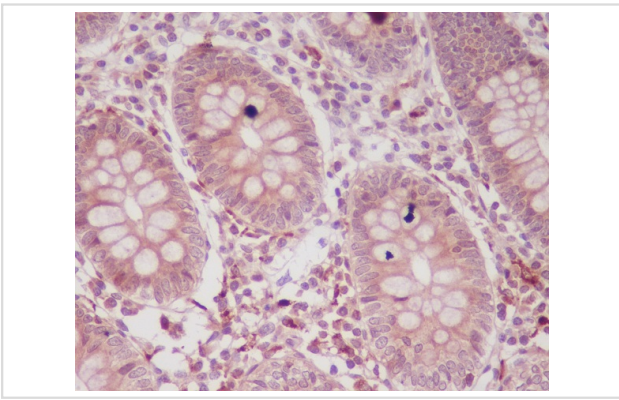
Application Details

WB 1:500~1:2000 IHC 1:50~1:100 ICC/IF 1:50~1:100 IP 1:50 FC 1:50

Images



Western blot analysis of p16 Arc expression in Human fetal brain lysate.



Immunohistochemical analysis of paraffin-embedded human colon, using p16 ARC Antibody.

Product Description

Functions as component of the Arp2/3 complex which is involved in regulation of actin polymerization and together with an activating nucleation-promoting factor (NPF) mediates the formation of branched actin networks.

Background

Functions as component of the Arp2/3 complex which is involved in regulation of actin polymerization and together with an activating nucleation-promoting factor (NPF) mediates the formation of branched actin networks.

Note: This product is for in vitro research use only