

Rab4 Rabbit mAb

Catalog No: #58721

Package Size: #58721-1 50ul #58721-2 100ul

Orders: order@signalwayantibody.com

Support: tech@signalwayantibody.com

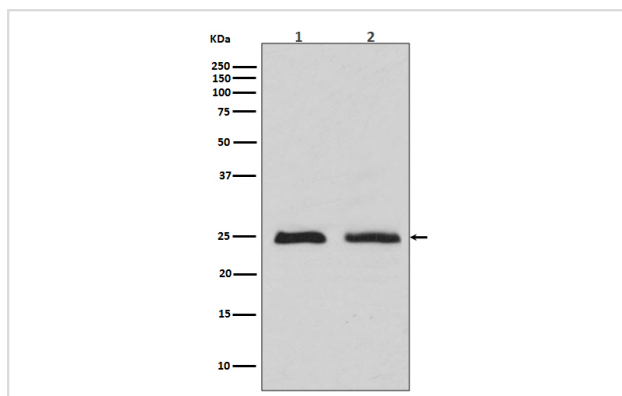
Description

Product Name	Rab4 Rabbit mAb
Host Species	Rabbit
Clonality	Monoclonal
Isotype	Rabbit IgG
Purification	Affinity-chromatography
Applications	WB ICC/IF FC
Species Reactivity	Human Mouse Rat
Specificity	Rab4 Antibody detects endogenous levels of total Rab4
Immunogen Description	A synthesized peptide derived from human Rab4
Other Names	Rab4 ; RAB4A; HRES 1 ;RAB4; Ras related protein Rab 4A;
Accession No.	Uniprot:P20338
Uniprot	P20338
Formulation	Rabbit IgG in phosphate buffered saline , pH 7.4, 150mM NaCl, 0.02% sodium azide and 50% glycerol.
Storage	Store at +4°C short term. Store at -20°C long term. Avoid freeze / thaw cycle.

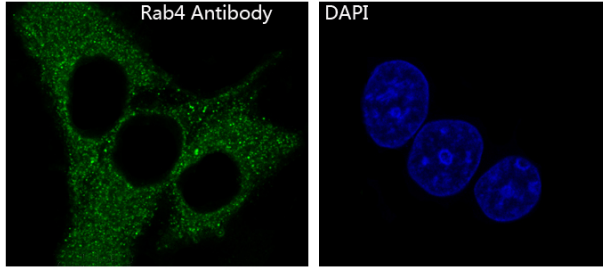
Application Details

WB 1:500~1:2000 ICC/IF 1:50~1:200 FC 1:50

Images



Western blot analysis of Rab4 expression in (1)MCF7 cell lysates (2)HeLa cell lysate.



Immunofluorescent analysis of HeLa cells, using Rab4 Antibody .

Product Description

The protein encoded by this gene belongs to the rab family. Rab4A protein is involved in the regulation of procathepsin L secretion, it was either inhibited by expression of a Rab4A dominant-negative mutant or increased by overexpression of the wild-type Rab4A in human melanoma cells.

Background

The protein encoded by this gene belongs to the rab family. Rab4A protein is involved in the regulation of procathepsin L secretion, it was either inhibited by expression of a Rab4A dominant-negative mutant or increased by overexpression of the wild-type Rab4A in human melanoma cells.

Note: This product is for in vitro research use only