

## CD90 / Thy1 Rabbit mAb

Catalog No: #58729

Package Size: #58729-1 50ul #58729-2 100ul

Orders: order@signalwayantibody.com

Support: tech@signalwayantibody.com

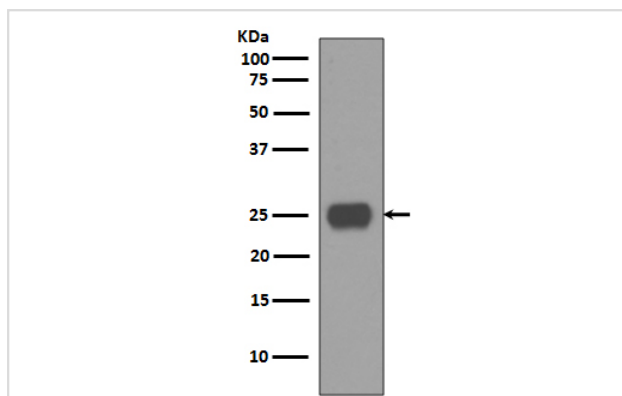
## Description

Product Name	CD90 / Thy1 Rabbit mAb
Host Species	Rabbit
Clonality	Monoclonal
Isotype	Rabbit IgG
Purification	Affinity-chromatography
Applications	WB IHC
Species Reactivity	Human Rat
Specificity	CD90 / Thy1 Antibody detects endogenous levels of total CD90 / Thy1
Immunogen Description	A synthesized peptide derived from human CD90 / Thy1
Other Names	Thy-1 membrane glycoprotein; Thy-1 antigen; CDw90; CD90; THY1;
Accession No.	Uniprot:P04216
Uniprot	P04216
Formulation	Rabbit IgG in phosphate buffered saline , pH 7.4, 150mM NaCl, 0.02% sodium azide and 50% glycerol.
Storage	Store at +4°C short term. Store at -20°C long term. Avoid freeze / thaw cycle.

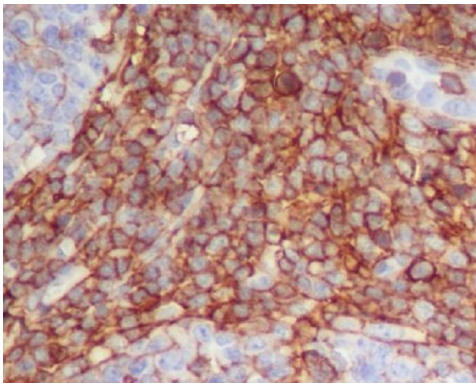
## Application Details

WB 1:500~1:2000 IHC 1:50~1:200

## Images



Western blot analysis of CD90 expression in Human fetal brain lysate.



Immunohistochemical analysis of paraffin-embedded human tonsil, using CD90 / Thy1 Antibody.

## Product Description

Thy1 is a GPI-anchored, developmentally regulated protein involved in various signaling cascades that mediate neurite outgrowth, T cell activation, tumor suppression, apoptosis, and fibrosis. It is highly expressed on the surface of adult neurons and is thought to play a role in modulating adhesive and migratory events, such as neurite extension.

## Background

Thy1 is a GPI-anchored, developmentally regulated protein involved in various signaling cascades that mediate neurite outgrowth, T cell activation, tumor suppression, apoptosis, and fibrosis. It is highly expressed on the surface of adult neurons and is thought to play a role in modulating adhesive and migratory events, such as neurite extension.

Note: This product is for in vitro research use only