

PARP Rabbit mAb

Catalog No: #58738

Package Size: #58738-1 50ul #58738-2 100ul

Orders: order@signalwayantibody.com

Support: tech@signalwayantibody.com

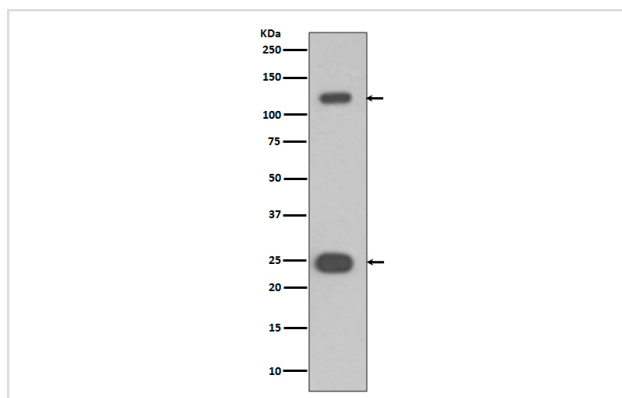
Description

Product Name	PARP Rabbit mAb
Host Species	Rabbit
Clonality	Monoclonal
Isotype	Rabbit IgG
Purification	Affinity-chromatography
Applications	WB IHC ICC/IF FC
Species Reactivity	Human Mouse Rat
Specificity	PARP Antibody detects endogenous levels of total PARP
Immunogen Description	A synthesized peptide derived from human PARP
Other Names	ADPRT; ADP-Ribosyltransferase; CPP32; PARP; PARP1; SCA1; PPOL; YAMA;
Accession No.	Uniprot:P09874
Uniprot	P09874
Formulation	Rabbit IgG in phosphate buffered saline , pH 7.4, 150mM NaCl, 0.02% sodium azide and 50% glycerol.
Storage	Store at +4°C short term. Store at -20°C long term. Avoid freeze / thaw cycle.

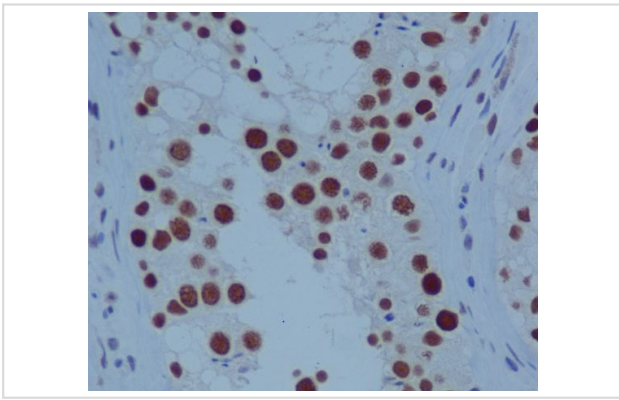
Application Details

WB 1:500~1:2000 IHC 1:50~1:200 ICC/IF 1:50~1:200 FC 1:50

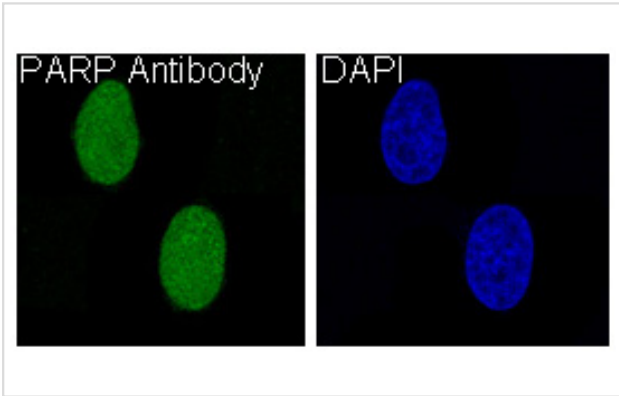
Images



Western blot analysis of PARP expression in Jurkat cell lysate.



Immunohistochemical analysis of paraffin-embedded human testis, using PARP Antibody.



Immunofluorescent analysis of HeLa cells, using PARP Antibody .

Product Description

Involved in the base excision repair (BER) pathway, by catalyzing the poly(ADP-ribosyl)ation of a limited number of acceptor proteins involved in chromatin architecture and in DNA metabolism. This modification follows DNA damages and appears as an obligatory step in a detection/signaling pathway leading to the reparation of DNA strand breaks.

Background

Involved in the base excision repair (BER) pathway, by catalyzing the poly(ADP-ribosyl)ation of a limited number of acceptor proteins involved in chromatin architecture and in DNA metabolism. This modification follows DNA damages and appears as an obligatory step in a detection/signaling pathway leading to the reparation of DNA strand breaks.

Note: This product is for in vitro research use only