

## STAT6 Rabbit mAb

Catalog No: #58741

Package Size: #58741-1 50ul #58741-2 100ul

Orders: [order@signalwayantibody.com](mailto:order@signalwayantibody.com)Support: [tech@signalwayantibody.com](mailto:tech@signalwayantibody.com)

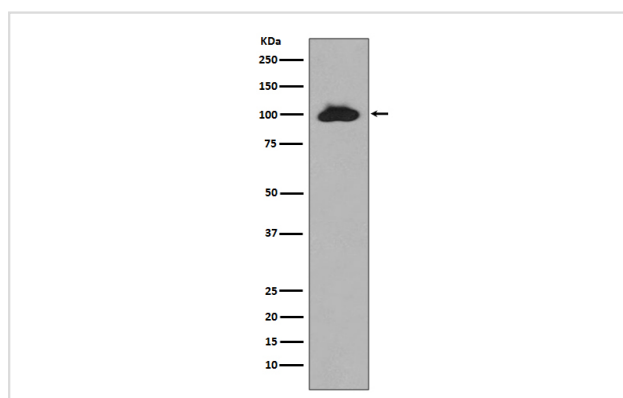
## Description

Product Name	STAT6 Rabbit mAb
Host Species	Rabbit
Clonality	Monoclonal
Isotype	Rabbit IgG
Purification	Affinity-chromatography
Applications	WB IHC ICC/IF IP
Species Reactivity	Human Mouse
Specificity	STAT6 Antibody detects endogenous levels of total STAT6
Immunogen Description	A synthesized peptide derived from human STAT6
Other Names	IL-4-STAT; Signal transducer and activator of transcription 6; interleukin-4 induced; STAT, interleukin4-induced; STAT6; STAT6B; STAT6C; transcription factor IL-4 STAT
Accession No.	Uniprot:P42226
Uniprot	P42226
Formulation	Rabbit IgG in phosphate buffered saline , pH 7.4, 150mM NaCl, 0.02% sodium azide and 50% glycerol.
Storage	Store at +4°C short term. Store at -20°C long term. Avoid freeze / thaw cycle.

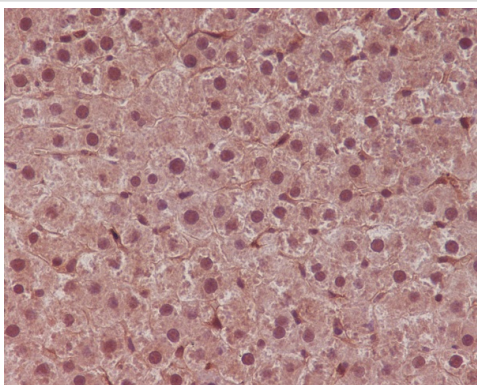
## Application Details

WB 1:500~1:2000 IHC 1:50~1:200 ICC/IF 1:50~1:200 IP 1:50

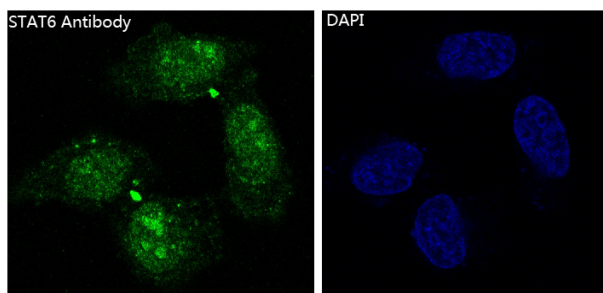
## Images



Western blot analysis of STAT6 expression in Raji cell lysate.



Immunohistochemical analysis of paraffin-embedded rat liver, using STAT6 Antibody.



Immunofluorescent analysis of HeLa cells, using STAT6 Antibody .

## Product Description

STAT6 transcription factor of the STAT family. Plays a central role in IL4-mediated biological responses. Induces the expression of BCL2L1/BCL-X(L), which is responsible for the anti-apoptotic activity of IL4.

## Background

STAT6 transcription factor of the STAT family. Plays a central role in IL4-mediated biological responses. Induces the expression of BCL2L1/BCL-X(L), which is responsible for the anti-apoptotic activity of IL4.

Note: This product is for in vitro research use only