

p16 INK Rabbit mAb

Catalog No: #58745

Package Size: #58745-1 50ul #58745-2 100ul

Orders: order@signalwayantibody.com

Support: tech@signalwayantibody.com

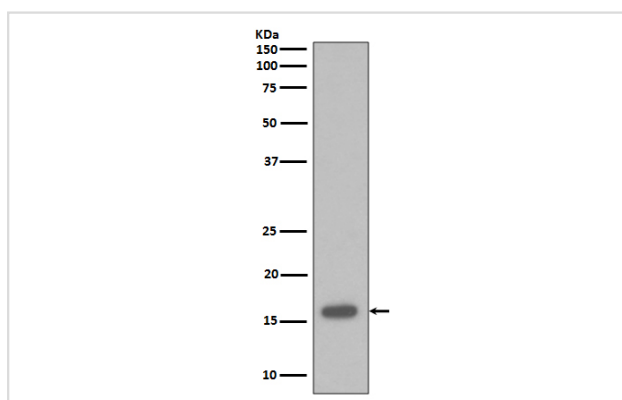
Description

Product Name	p16 INK Rabbit mAb
Host Species	Rabbit
Clonality	Monoclonal
Isotype	Rabbit IgG
Purification	Affinity-chromatography
Applications	WB IHC ICC/IF IP FC
Species Reactivity	Human
Specificity	p16 INK Antibody detects endogenous levels of total p16 INK
Immunogen Description	A synthesized peptide derived from human p16 INK
Other Names	CDKN2A; CDKN2; MTS1; isoforms 1/2/3; Cyclin-dependent kinase 4 inhibitor A; CDK4I; P16INK4; p16INK4a; Multiple tumor suppressor 1;
Accession No.	Uniprot:P42771
Uniprot	P42771
Formulation	Rabbit IgG in phosphate buffered saline , pH 7.4, 150mM NaCl, 0.02% sodium azide and 50% glycerol.
Storage	Store at +4°C short term. Store at -20°C long term. Avoid freeze / thaw cycle.

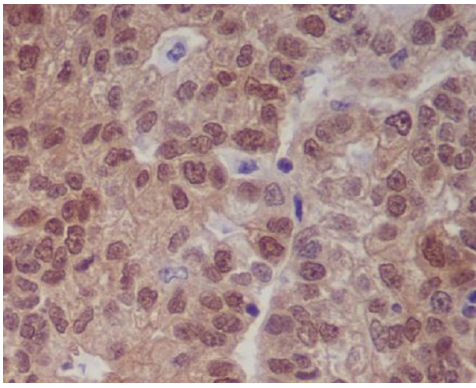
Application Details

WB 1:500~1:2000 IHC 1:50~1:200 ICC/IF 1:50~1:200 IP 1:30 FC 1:100

Images



Western blot analysis of p16 INK expression in 293T cell lysate.



Immunohistochemical analysis of paraffin-embedded human gastric, using p16 INK Antibody.

Product Description

p16-INK4A a cell-cycle regulatory protein that Interacts with CDK4 and CDK6, inhibiting their ability to interact with cyclins D. Inhibits the phosphorylation of the retinoblastoma protein by CDK4 or CDK6. Four alternatively spliced isoforms have been reported.

Background

p16-INK4A a cell-cycle regulatory protein that Interacts with CDK4 and CDK6, inhibiting their ability to interact with cyclins D. Inhibits the phosphorylation of the retinoblastoma protein by CDK4 or CDK6. Four alternatively spliced isoforms have been reported.

Note: This product is for in vitro research use only