

## SHP1 Rabbit mAb

Catalog No: #58749

Package Size: #58749-1 50ul #58749-2 100ul

Orders: order@signalwayantibody.com

Support: tech@signalwayantibody.com

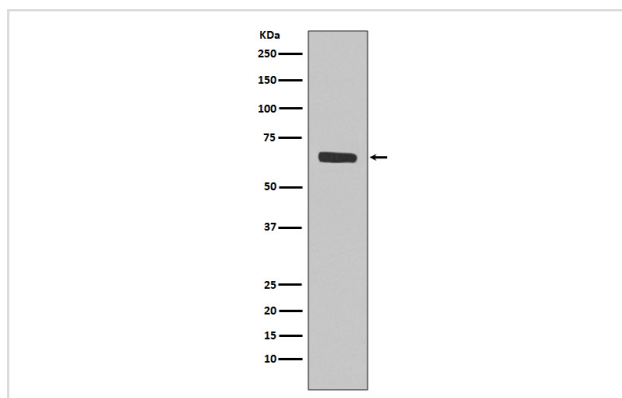
## Description

Product Name	SHP1 Rabbit mAb
Host Species	Rabbit
Clonality	Monoclonal
Isotype	Rabbit IgG
Purification	Affinity-chromatography
Applications	WB IHC
Species Reactivity	Human Mouse Rat
Specificity	SHP1 Antibody detects endogenous levels of total SHP1
Immunogen Description	A synthesized peptide derived from human SHP1
Other Names	70Z-SHP; EC 3.1.3.48; HCP; HCPH; PTN6; PTP-1C; PTP1C; PTPN6; SH-PTP1; SHP1;
Accession No.	Uniprot:P29350
Uniprot	P29350
Formulation	Rabbit IgG in phosphate buffered saline , pH 7.4, 150mM NaCl, 0.02% sodium azide and 50% glycerol.
Storage	Store at +4°C short term. Store at -20°C long term. Avoid freeze / thaw cycle.

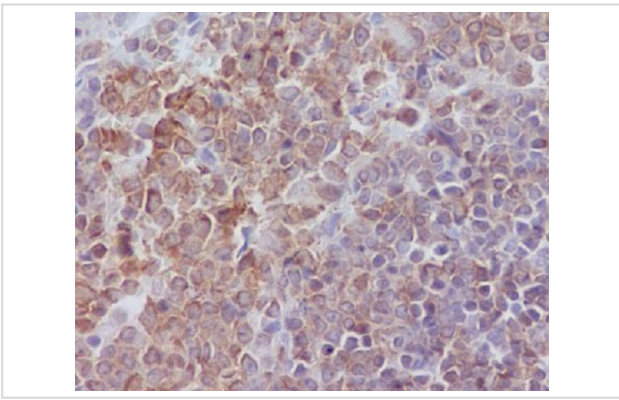
## Application Details

WB 1:500~1:2000 IHC 1:50~1:200

## Images



Western blot analysis of SHP1 expression in Jurkat cell lysate.



Immunohistochemical analysis of paraffin-embedded rat spleen, using SHP1 Antibody.

## Product Description

The protein encoded by this gene is a member of the protein tyrosine phosphatase (PTP) family. PTPs are known to be signaling molecules that regulate a variety of cellular processes including cell growth, differentiation, mitotic cycle, and oncogenic transformation.

## Background

The protein encoded by this gene is a member of the protein tyrosine phosphatase (PTP) family. PTPs are known to be signaling molecules that regulate a variety of cellular processes including cell growth, differentiation, mitotic cycle, and oncogenic transformation.

Note: This product is for in vitro research use only