

MCSF Rabbit mAb

Catalog No: #58750

Package Size: #58750-1 50ul #58750-2 100ul

Orders: order@signalwayantibody.com

Support: tech@signalwayantibody.com

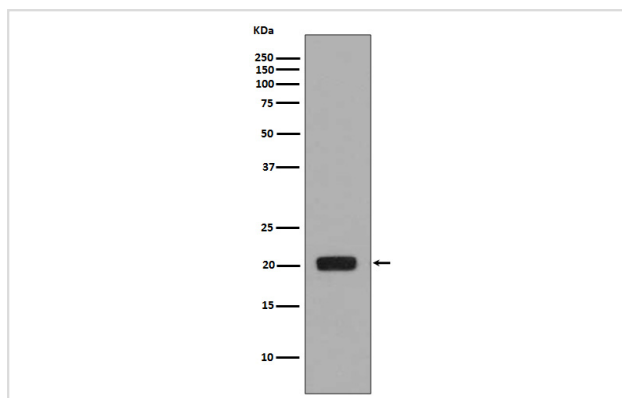
Description

Product Name	MCSF Rabbit mAb
Host Species	Rabbit
Clonality	Monoclonal
Isotype	Rabbit IgG
Purification	Affinity-chromatography
Applications	WB IHC ICC/IF IP
Species Reactivity	Human
Specificity	MCSF Antibody detects endogenous levels of total MCSF
Immunogen Description	A synthesized peptide derived from human MCSF
Other Names	CSF1; Csfm; MCSF; MGC31930; Macrophage colony stimulating factor;
Accession No.	Uniprot:P09603
Uniprot	P09603
Formulation	Rabbit IgG in phosphate buffered saline , pH 7.4, 150mM NaCl, 0.02% sodium azide and 50% glycerol.
Storage	Store at +4°C short term. Store at -20°C long term. Avoid freeze / thaw cycle.

Application Details

WB 1:1000~1:1000 IHC 1:50~1:200 ICC/IF 1:50~1:100 IP 1:50

Images



Western blot analysis of MCSF expression in MCSF recombinant protein.

Product Description

CSF1, also known as MCSF, is a four- α -helical bundle cytokine that controls the production, differentiation, and function of macrophages. The active form of the protein is found extracellularly as a disulfide-linked homodimer, and is thought to be produced by proteolytic cleavage of membrane-bound precursors. This protein may be involved in development of the placenta.

Background

CSF1, also known as MCSF, is a four- α -helical bundle cytokine that controls the production, differentiation, and function of macrophages. The active form of the protein is found extracellularly as a disulfide-linked homodimer, and is thought to be produced by proteolytic cleavage of membrane-bound precursors. This protein may be involved in development of the placenta.

Note: This product is for in vitro research use only