

Bad Rabbit mAb

Catalog No: #58753

Package Size: #58753-1 50ul #58753-2 100ul

Orders: order@signalwayantibody.com

Support: tech@signalwayantibody.com

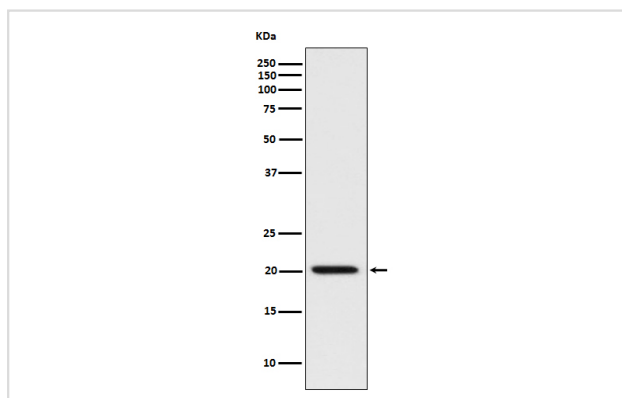
Description

Product Name	Bad Rabbit mAb
Host Species	Rabbit
Clonality	Monoclonal
Isotype	Rabbit IgG
Purification	Affinity-chromatography
Applications	WB IHC ICC/IF IP FC
Species Reactivity	Human Mouse Rat
Specificity	Bad Antibody detects endogenous levels of total Bad
Immunogen Description	A synthesized peptide derived from human Bad
Other Names	BAD; BBC6; BCL2L8; Bcl- XL/Bcl-2 associated death promoter; Bcl-2 binding component 6; Bcl-2-like 8 protein; Bcl-xL/Bcl-2 associated death promoter;
Accession No.	Uniprot:Q92934
Uniprot	Q92934
Formulation	Rabbit IgG in phosphate buffered saline , pH 7.4, 150mM NaCl, 0.02% sodium azide and 50% glycerol.
Storage	Store at +4°C short term. Store at -20°C long term. Avoid freeze / thaw cycle.

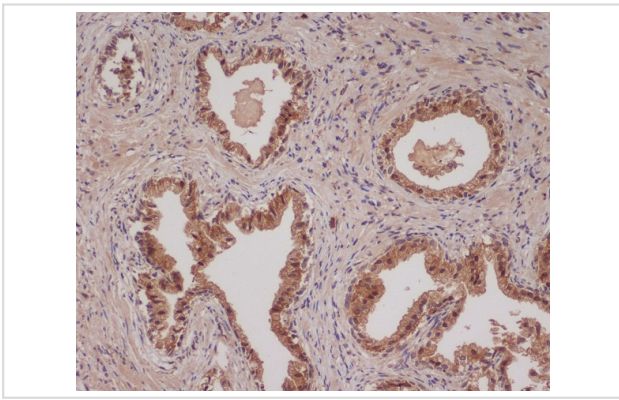
Application Details

WB 1:1000~1:2000 IHC 1:50~1:200 ICC/IF 1:50~1:200 IP 1:30 FC 1:50

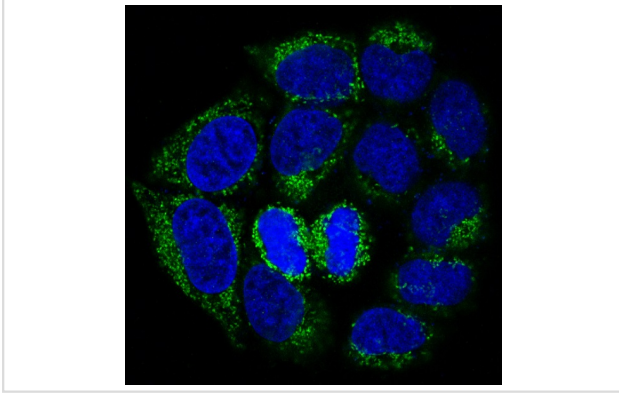
Images



Western blot analysis of BAD expression in HeLa cell lysate.



Immunohistochemical analysis of paraffin-embedded human colon cancer, using Bad Antibody.



Immunofluorescent analysis of HeLa cells, using Bad Antibody

Product Description

Promotes cell death. Successfully competes for the binding to Bcl-X(L), Bcl-2 and Bcl-W, thereby affecting the level of heterodimerization of these proteins with BAX. Can reverse the death repressor activity of Bcl-X(L), but not that of Bcl-2 (By similarity). Appears to act as a link between growth factor receptor signaling and the apoptotic pathways.

Background

Promotes cell death. Successfully competes for the binding to Bcl-X(L), Bcl-2 and Bcl-W, thereby affecting the level of heterodimerization of these proteins with BAX. Can reverse the death repressor activity of Bcl-X(L), but not that of Bcl-2 (By similarity). Appears to act as a link between growth factor receptor signaling and the apoptotic pathways.

Note: This product is for in vitro research use only