

ELK1 Rabbit mAb

Catalog No: #58757

Package Size: #58757-1 50ul #58757-2 100ul

Orders: order@signalwayantibody.com

Support: tech@signalwayantibody.com

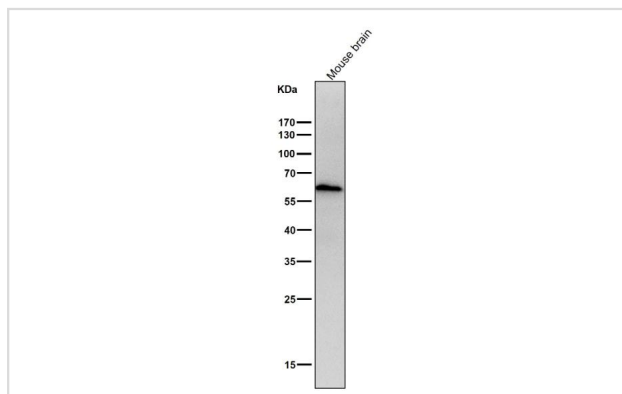
Description

Product Name	ELK1 Rabbit mAb
Host Species	Rabbit
Clonality	Monoclonal
Clone No.	7D2
Isotype	Rabbit IgG
Purification	Affinity-chromatography
Applications	WB IHC ICC/IF IP
Species Reactivity	Human Mouse Rat
Specificity	ELK1 Antibody detects endogenous levels of total ELK1
Immunogen Description	A synthesized peptide derived from human ELK1
Target Name	ELK1
Other Names	ELK1; ETS-domain protein ELK-1; ETS-domain protein Elk-1;
Accession No.	Uniprot:P19419
Uniprot	P19419
Formulation	Rabbit IgG in phosphate buffered saline , pH 7.4, 150mM NaCl, 0.02% sodium azide and 50% glycerol.
Storage	Store at +4°C short term. Store at -20°C long term. Avoid freeze / thaw cycle.

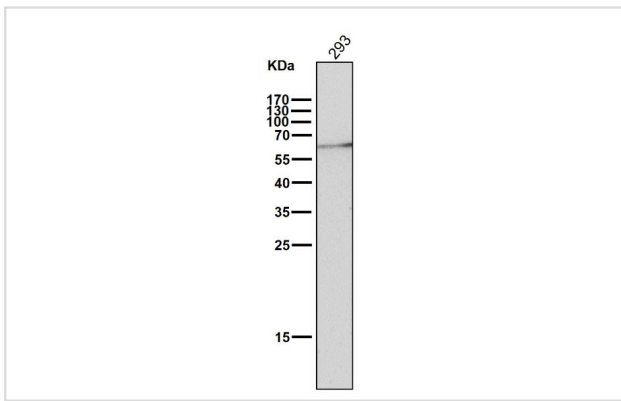
Application Details

WB 1:500~1:1000 IHC 1:50~1:200 ICC/IF 1:50~1:200 IP 1:30

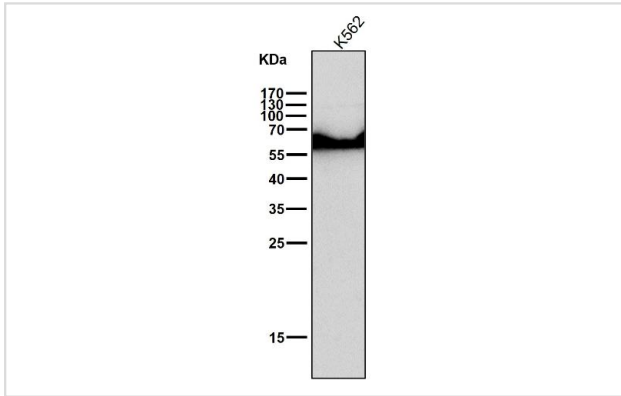
Images



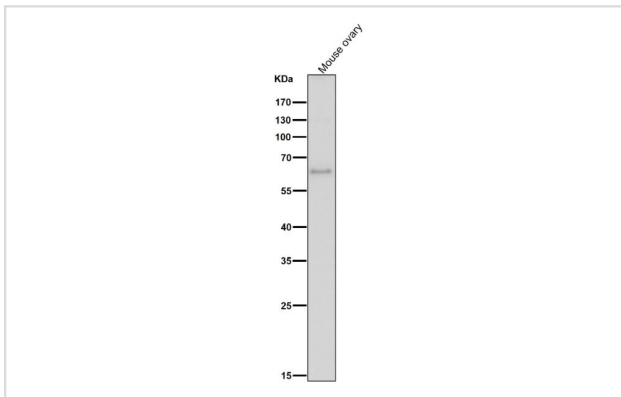
All Lanes: ELK1 Antibody at 1/1000 dilution.Lane1:Mouse brain.Proteins at 20ug per laneSecondary: Goat Anti-Rabbit IgG(HRP) at 1/20000 dilutionPredicted band size : 62kDaObserved band size: 62kDa



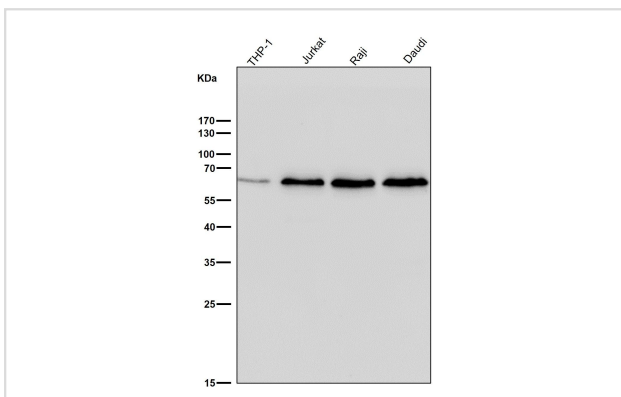
All Lanes: ELK1 Antibody at 1/1000 dilution.Lane1:293.Proteins at 20ug per laneSecondary: Goat Anti-Rabbit IgG(HRP) at 1/20000 dilutionPredicted band size : 62kDaObserved band size: 62kDa



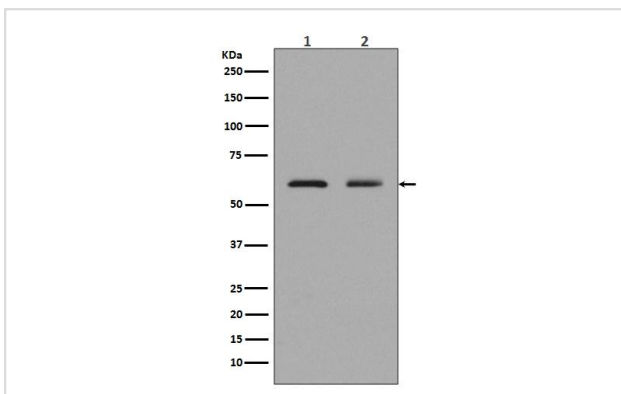
All Lanes: ELK1 Antibody at 1/1000 dilution.Lane1:K562.Proteins at 20ug per laneSecondary: Goat Anti-Rabbit IgG(HRP) at 1/20000 dilutionPredicted band size : 62kDaObserved band size: 62kDa



All Lanes: ELK1 Antibody at 1/1000 dilution.Lane1:Mouse ovary.Proteins at 20ug per laneSecondary: Goat Anti-Rabbit IgG(HRP) at 1/20000 dilutionPredicted band size : 62kDaObserved band size: 62kDa



All Lanes: ELK1 Antibody at 1/1000 dilution.Lane1:THP-1.Lane2:Jurkat.Lane3:Raji.Lane4:Daudi.(Proteins at 20ug per lane)Secondary: Goat Anti-Rabbit IgG(HRP) at 1/20000 dilutionPredicted band size : 62kDaObserved band size: 62kDa



All Lanes: ELK1 Antibody at 1/1000 dilution.Lane1:Neuro-2a cell lysates.Proteins at 20ug per laneLane2:K562 cell lysate.Proteins at 20ug per laneSecondary: Goat Anti-Rabbit IgG(HRP) at 1/20000 dilutionPredicted band size : 62kDaObserved band size: 62kDa

Product Description

This gene is a member of the Ets family of transcription factors and of the ternary complex factor (TCF) subfamily. Proteins of the TCF subfamily form a ternary complex by binding to the the serum response factor and the serum reponse element in the promoter of the c-fos proto-oncogene. The protein encoded by this gene is a nuclear target for the ras-raf-MAPK signaling cascade.

Background

This gene is a member of the Ets family of transcription factors and of the ternary complex factor (TCF) subfamily. Proteins of the TCF subfamily form a ternary complex by binding to the the serum response factor and the serum reponse element in the promoter of the c-fos proto-oncogene. The protein encoded by this gene is a nuclear target for the ras-raf-MAPK signaling cascade.

Note: This product is for in vitro research use only