

DARPP32 Rabbit mAb

Catalog No: #58760

Package Size: #58760-1 50ul #58760-2 100ul

Orders: order@signalwayantibody.com

Support: tech@signalwayantibody.com

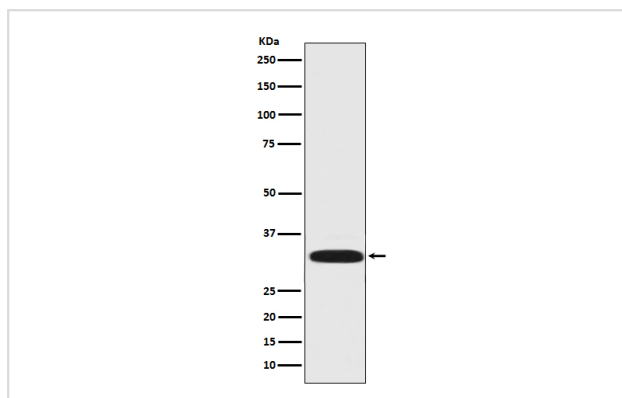
Description

Product Name	DARPP32 Rabbit mAb
Host Species	Rabbit
Clonality	Monoclonal
Isotype	Rabbit IgG
Purification	Affinity-chromatography
Applications	WB IHC ICC/IF IP
Species Reactivity	Human Mouse Rat
Specificity	DARPP32 Antibody detects endogenous levels of total DARPP32
Immunogen Description	A synthesized peptide derived from human DARPP32
Other Names	DARPP32; PPP1R1B; PPR1B; Protein phosphatase 1 regulatory subunit 1B;
Accession No.	Uniprot:Q9UD71
Uniprot	Q9UD71
Formulation	Rabbit IgG in phosphate buffered saline , pH 7.4, 150mM NaCl, 0.02% sodium azide and 50% glycerol.
Storage	Store at +4°C short term. Store at -20°C long term. Avoid freeze / thaw cycle.

Application Details

WB 1:1000~1:2000 IHC 1:50~1:200 ICC/IF 1:50~1:100 IP 1:20

Images



Western blot analysis of DARPP-32 expression in Rat brain lysate.

Product Description

DARPP-32 a member of the protein phosphatase inhibitor 1 family. A dopamine- and cyclic AMP-regulated neuronal phosphoprotein. Both dopaminergic and glutamatergic (NMDA) receptor stimulation regulate the extent of DARPP32 phosphorylation, but in opposite directions.

Background

DARPP-32 a member of the protein phosphatase inhibitor 1 family. A dopamine- and cyclic AMP-regulated neuronal phosphoprotein. Both dopaminergic and glutamatergic (NMDA) receptor stimulation regulate the extent of DARPP32 phosphorylation, but in opposite directions.

Note: This product is for in vitro research use only