

## EpCAM Rabbit mAb

Catalog No: #58762

Package Size: #58762-1 50ul #58762-2 100ul

Orders: order@signalwayantibody.com

Support: tech@signalwayantibody.com

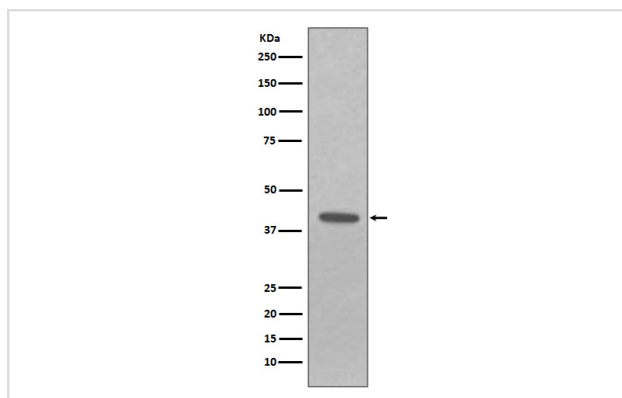
## Description

Product Name	EpCAM Rabbit mAb
Host Species	Rabbit
Clonality	Monoclonal
Isotype	Rabbit IgG
Purification	Affinity-chromatography
Applications	WB
Species Reactivity	Human Mouse Rat
Specificity	EpCAM Antibody detects endogenous levels of total EpCAM
Immunogen Description	A synthesized peptide derived from human EpCAM
Other Names	ESA; KSA; M4S1; MK1; DIAR5; EGP2;EGP40; KS1/4; MIC18; TROP1; TACSTD1; EPCAM;
Accession No.	Uniprot:P16422
Uniprot	P16422
Formulation	Rabbit IgG in phosphate buffered saline , pH 7.4, 150mM NaCl, 0.02% sodium azide and 50% glycerol.
Storage	Store at +4°C short term. Store at -20°C long term. Avoid freeze / thaw cycle.

## Application Details

WB 1:1000~1:2000

## Images



Western blot analysis of EpCAM expression in A431 cell lysate.

## Product Description

May act as a physical homophilic interaction molecule between intestinal epithelial cells (IECs) and intraepithelial lymphocytes (IELs) at the mucosal epithelium for providing immunological barrier as a first line of defense against mucosal infection. Plays a role in embryonic stem cells proliferation and differentiation. Up-regulates the expression of FABP5, MYC and cyclins A and E.

## Background

---

May act as a physical homophilic interaction molecule between intestinal epithelial cells (IECs) and intraepithelial lymphocytes (IELs) at the mucosal epithelium for providing immunological barrier as a first line of defense against mucosal infection. Plays a role in embryonic stem cells proliferation and differentiation. Up-regulates the expression of FABP5, MYC and cyclins A and E.

---

Note: This product is for in vitro research use only