

## Cyclin B1 Rabbit mAb

Catalog No: #58763

Package Size: #58763-1 50ul #58763-2 100ul

Orders: order@signalwayantibody.com

Support: tech@signalwayantibody.com

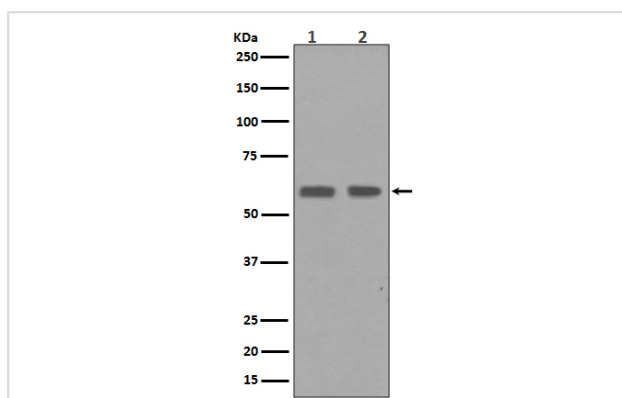
## Description

Product Name	Cyclin B1 Rabbit mAb
Host Species	Rabbit
Clonality	Monoclonal
Isotype	Rabbit IgG
Purification	Affinity-chromatography
Applications	WB IHC ICC/IF IP FC
Species Reactivity	Human
Specificity	Cyclin B1 Antibody detects endogenous levels of total Cyclin B1
Immunogen Description	A synthesized peptide derived from human Cyclin B1
Other Names	CCN-2; CCNB; CCNB1; CCNB1-RS1; CYCB; CYCB1; G2/mitotic-specific cyclin B1;
Accession No.	Uniprot:P14635
Uniprot	P14635
Formulation	Rabbit IgG in phosphate buffered saline , pH 7.4, 150mM NaCl, 0.02% sodium azide and 50% glycerol.
Storage	Store at +4°C short term. Store at -20°C long term. Avoid freeze / thaw cycle.

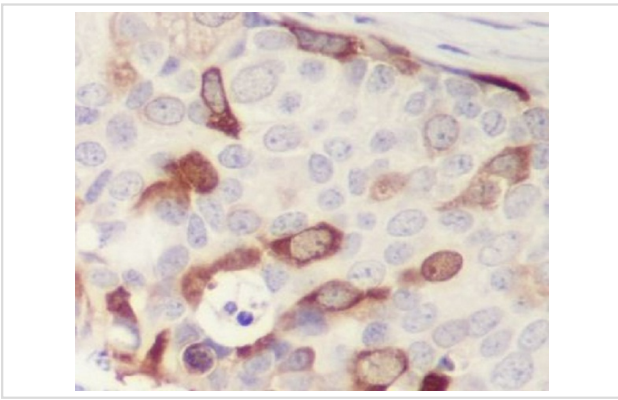
## Application Details

WB 1:1000~1:2000 IHC 1:50~1:200 ICC/IF 1:50~1:200 IP 1:50 FC 1:30

## Images



Western blot analysis of Cyclin B1 expression in (1)HaCaT cell lysates; (2)HepG2 cell lysate.



Immunohistochemical analysis of paraffin-embedded human breast cancer, using Cyclin B1 Antibody.

## Product Description

Essential for the control of the cell cycle at the G2/M (mitosis) transition. a member of the highly conserved cyclin family, whose members are characterized by a dramatic periodicity in protein abundance through the cell cycle. Cyclins function as regulators of CDK kinases.

## Background

Essential for the control of the cell cycle at the G2/M (mitosis) transition. a member of the highly conserved cyclin family, whose members are characterized by a dramatic periodicity in protein abundance through the cell cycle. Cyclins function as regulators of CDK kinases.

Note: This product is for in vitro research use only