

Maltose Binding Protein Rabbit mAb

Catalog No: #58766

Package Size: #58766-1 50ul #58766-2 100ul

Orders: order@signalwayantibody.com

Support: tech@signalwayantibody.com

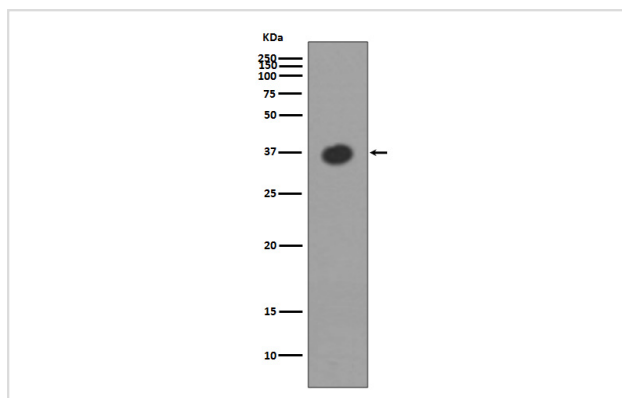
Description

Product Name	Maltose Binding Protein Rabbit mAb
Host Species	Rabbit
Clonality	Monoclonal
Isotype	Rabbit IgG
Purification	Affinity-chromatography
Applications	WB
Species Reactivity	All
Specificity	Maltose Binding Protein Antibody detects endogenous levels of total Maltose Binding Protein
Immunogen Description	A synthesized peptide derived from human Maltose Binding Protein
Other Names	MMBP; MalE; Maltose Binding Protein; Maltose binding periplasmic protein;
Accession No.	Uniprot:P0AEX9
Uniprot	P0AEX9
Formulation	Rabbit IgG in phosphate buffered saline , pH 7.4, 150mM NaCl, 0.02% sodium azide and 50% glycerol.
Storage	Store at +4°C short term. Store at -20°C long term. Avoid freeze / thaw cycle.

Application Details

WB 1:1000~1:2000

Images



Western blot analysis of MBP expression in Escherichia coli lysate.

Product Description

Epitope tagging offers an easy and universal strategy for the identification and purification of proteins derived by recombinant DNA technology. The insertion of a Maltose Binding Protein (MBP) tag creates a stable fusion product that does not interfere with the bioactivity of the protein or with the biodistribution of the MBP tagged product. Cleavage by factor Xa separates MBP from its partner protein.

Background

Epitope tagging offers an easy and universal strategy for the identification and purification of proteins derived by recombinant DNA technology. The insertion of a Maltose Binding Protein (MBP) tag creates a stable fusion product that does not interfere with the bioactivity of the protein or with the biodistribution of the MBP tagged product. Cleavage by factor Xa separates MBP from its partner protein.

Note: This product is for in vitro research use only