

Firefly Luciferase Rabbit mAb

Catalog No: #58775

Package Size: #58775-1 50ul #58775-2 100ul

Orders: order@signalwayantibody.com

Support: tech@signalwayantibody.com

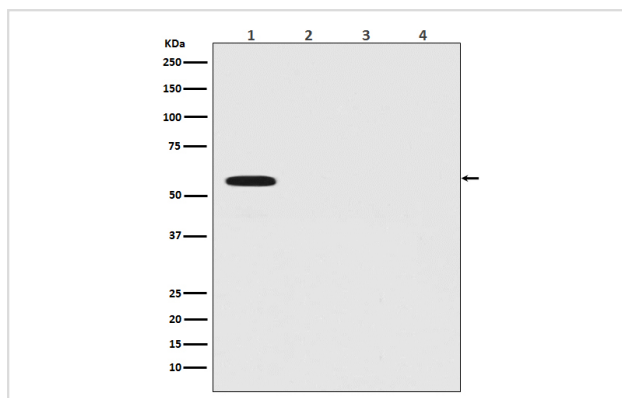
Description

| | |
|-----------------------|--|
| Product Name | Firefly Luciferase Rabbit mAb |
| Host Species | Rabbit |
| Clonality | Monoclonal |
| Isotype | Rabbit IgG |
| Purification | Affinity-chromatography |
| Applications | WB ICC/IF |
| Species Reactivity | Firefly |
| Specificity | Firefly Luciferase Antibody detects endogenous levels of total Firefly Luciferase |
| Immunogen Description | A synthesized peptide derived from Firefly Luciferase |
| Other Names | Luciferase; Firefly; Luciferin 4 monooxygenase; |
| Accession No. | Uniprot:P08659 |
| Uniprot | P08659 |
| Formulation | Rabbit IgG in phosphate buffered saline , pH 7.4, 150mM NaCl, 0.02% sodium azide and 50% glycerol. |
| Storage | Store at +4°C short term. Store at -20°C long term. Avoid freeze / thaw cycle. |

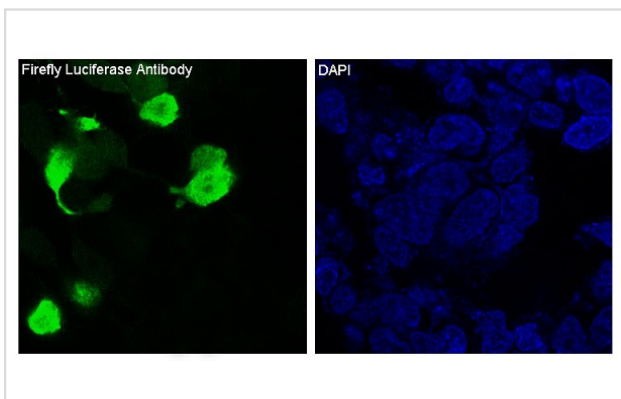
Application Details

WB 1:1000~1:5000 ICC/IF 1:50~1:200

Images



Western blot analysis of Firefly Luciferase Antibody expression in (1) Firefly Luciferase transfected 293T cell lysate; (2) HeLa cell lysate; (3) NIH/3T3 cell lysate; (4) C6 cell lysate.



Immunofluorescent analysis of 293 cells transfected with Firefly Luciferase, using Firefly Luciferase Antibody .

Product Description

Produces green light with a wavelength of 562 nm. Luciferase from the firefly has become one of the more widely used reporter proteins for the study of gene expression. Luciferase catalyzes a bioluminescent reaction which requires the substrate luciferin as well as Mg^{2+} and ATP. Mixing these reagents with the cell extract containing luciferase, results in a flash of light that decays rapidly. This light can be detected by a luminometer. The total light emission is proportional to the luciferase activity of the sample.

Background

Produces green light with a wavelength of 562 nm. Luciferase from the firefly has become one of the more widely used reporter proteins for the study of gene expression. Luciferase catalyzes a bioluminescent reaction which requires the substrate luciferin as well as Mg^{2+} and ATP. Mixing these reagents with the cell extract containing luciferase, results in a flash of light that decays rapidly. This light can be detected by a luminometer. The total light emission is proportional to the luciferase activity of the sample.

Note: This product is for in vitro research use only