

Renilla Luciferase Rabbit mAb

Catalog No: #58776

Package Size: #58776-1 50ul #58776-2 100ul

Orders: order@signalwayantibody.com

Support: tech@signalwayantibody.com

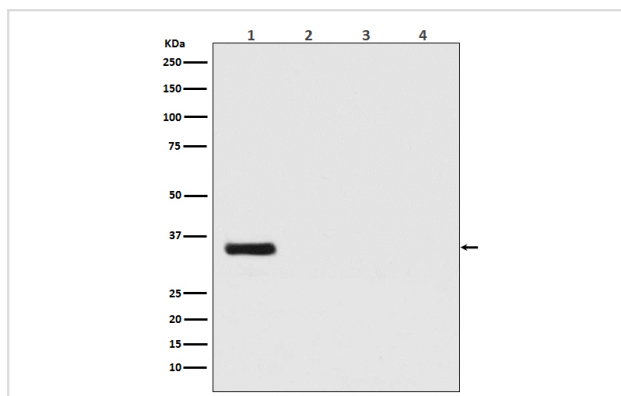
Description

Product Name	Renilla Luciferase Rabbit mAb
Host Species	Rabbit
Clonality	Monoclonal
Isotype	Rabbit IgG
Purification	Affinity-chromatography
Applications	WB ICC/IF
Species Reactivity	Renilla Luciferase
Specificity	Renilla Luciferase Antibody detects endogenous levels of total Renilla Luciferase
Immunogen Description	A synthesized peptide derived from Renilla Luciferase
Other Names	Renilla-type luciferase; Renilla luciferin 2 monooxygenase;
Accession No.	Uniprot:P27652
Uniprot	P27652
Formulation	Rabbit IgG in phosphate buffered saline , pH 7.4, 150mM NaCl, 0.02% sodium azide and 50% glycerol.
Storage	Store at +4°C short term. Store at -20°C long term. Avoid freeze / thaw cycle.

Application Details

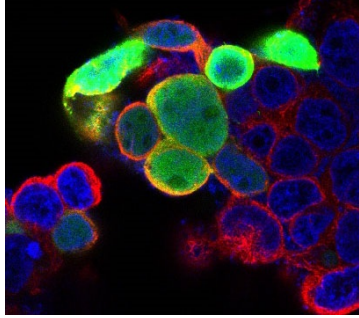
WB 1:500~1:2000 ICC/IF 1:50~1:200

Images



Western blot analysis of Renilla Luciferase expression in (1) Renilla Luciferase transfected 293 cell lysate; (2) HeLa cell lysate; (3) NIH/3T3 cell lysate; (4) C6 cell lysate.

Renilla Luciferase Antibody (green)
nucleus-DAPI



Immunofluorescent analysis of 293 cells transfected with Renilla Luciferase, using Renilla Luciferase Antibody .

Product Description

Renilla luciferin + O₂ = oxidized Renilla luciferin + CO₂ + light. The Green Renilla luciferase is a 36kDa protein produced by a derivative of the wild type Renilla luciferase gene from the sea pansy, *Renilla reniformis*. Compared to the wild type luciferase, Green Renilla is more stable in serum and has an the emission spectrum that is shifted toward the green region. The protein provides extremely bright flash signal that decays rapidly.

Background

Renilla luciferin + O₂ = oxidized Renilla luciferin + CO₂ + light. The Green Renilla luciferase is a 36kDa protein produced by a derivative of the wild type Renilla luciferase gene from the sea pansy, *Renilla reniformis*. Compared to the wild type luciferase, Green Renilla is more stable in serum and has an the emission spectrum that is shifted toward the green region. The protein provides extremely bright flash signal that decays rapidly.

Note: This product is for in vitro research use only