

## Tubulin gamma Rabbit mAb

Catalog No: #58778

Package Size: #58778-1 50ul #58778-2 100ul

Orders: order@signalwayantibody.com

Support: tech@signalwayantibody.com

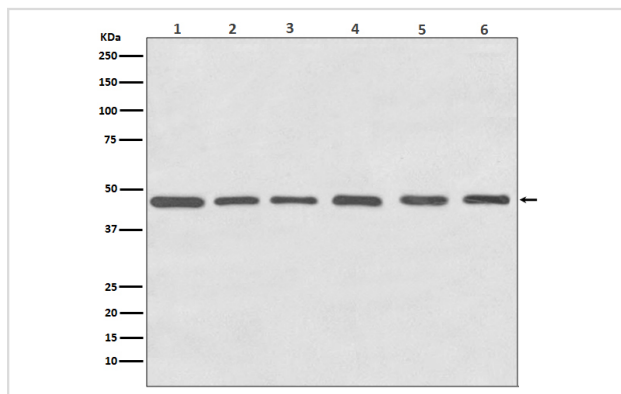
## Description

Product Name	Tubulin gamma Rabbit mAb
Host Species	Rabbit
Clonality	Monoclonal
Isotype	Rabbit IgG
Purification	Affinity-chromatography
Applications	WB IHC ICC/IF IP FC
Species Reactivity	Human Mouse Rat Monkey Chicken Hamster Cow Dog Fish Xenopus tropicalis
Specificity	Tubulin gamma Antibody detects endogenous levels of total Tubulin gamma
Immunogen Description	A synthesized peptide derived from human Tubulin gamma
Other Names	Gamma-1-tubulin; Gamma-tubulin complex component 1; GCP-1; TBG1; TUBG; TUBG1; TUBGCP1; Tubulin gamma-1 chain; tubulin, gamma 1; tubulin, gamma polypeptide,gamma tubulin;
Accession No.	Uniprot:P23258
Uniprot	P23258
Calculated MW	48kDa
Formulation	Rabbit IgG in phosphate buffered saline , pH 7.4, 150mM NaCl, 0.02% sodium azide and 50% glycerol.
Storage	Store at +4°C short term. Store at -20°C long term. Avoid freeze / thaw cycle.

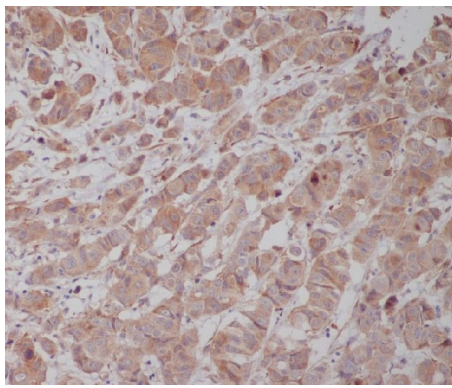
## Application Details

WB 1:500~1:2000 IHC 1:50~1:200 ICC/IF 1:50~1:200 IP 1:50 FC 1:50

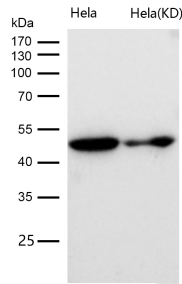
## Images



Western blot analysis of Tubulin gamma expression in (1) HeLa cell lysate; (2) NIH 3T3 cell lysate; (3) C6 cell lysate; (4) Zebrafish lysates; (5) COS-1 cell lysate; (6) MDCK cell lysate.



Immunohistochemical analysis of paraffin-embedded human breast cancer, using Tubulin gamma Antibody.



All lanes use the Antibody at 1:1K dilution for 1 hour at room temperature.

## Product Description

TUBG1 Tubulin is the major constituent of microtubules. Gamma tubulin is found at microtubule organizing centers (MTOC) such as the spindle poles or the centrosome. Pericentriolar matrix component that regulates alpha/beta tubulin minus-end nucleation, centrosome duplication and spindle formation. Interacts with GCP2 and GCP3. Interacts with B9D2. Interacts with CDK5RAP2;

## Background

TUBG1 Tubulin is the major constituent of microtubules. Gamma tubulin is found at microtubule organizing centers (MTOC) such as the spindle poles or the centrosome. Pericentriolar matrix component that regulates alpha/beta tubulin minus-end nucleation, centrosome duplication and spindle formation. Interacts with GCP2 and GCP3. Interacts with B9D2. Interacts with CDK5RAP2;

Note: This product is for in vitro research use only