

## CD31 Rabbit mAb

Catalog No: #58782

Package Size: #58782-1 50ul #58782-2 100ul

Orders: [order@signalwayantibody.com](mailto:order@signalwayantibody.com)Support: [tech@signalwayantibody.com](mailto:tech@signalwayantibody.com)

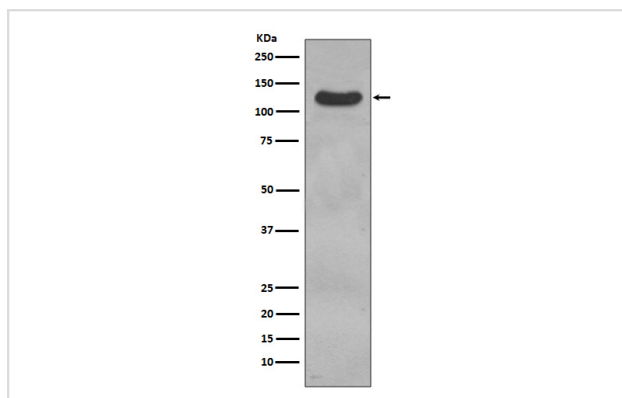
## Description

Product Name	CD31 Rabbit mAb
Host Species	Rabbit
Clonality	Monoclonal
Isotype	Rabbit IgG
Purification	Affinity-chromatography
Applications	WB IHC FC
Species Reactivity	Human
Specificity	CD31 Antibody detects endogenous levels of total CD31
Immunogen Description	A synthesized peptide derived from human CD31
Other Names	CD31; CD31 antigen; EndoCAM; PEC1; PECA1; PECAM; PECAM1;
Accession No.	Uniprot:P16284
Uniprot	P16284
Formulation	Rabbit IgG in phosphate buffered saline , pH 7.4, 150mM NaCl, 0.02% sodium azide and 50% glycerol.
Storage	Store at +4°C short term. Store at -20°C long term. Avoid freeze / thaw cycle.

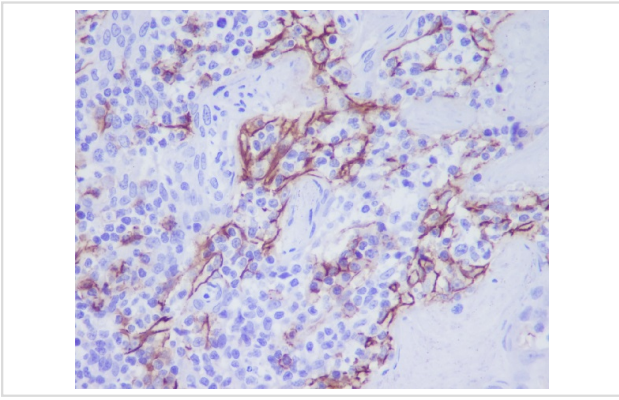
## Application Details

WB 1:500~1:2000 IHC 1:50~1:200 FC 1:50

## Images



Western blot analysis of CD31 expression in THP1 cell lysate.



Immunohistochemical analysis of paraffin-embedded human tonsil, using CD31 Antibody.

## Product Description

CD31 (Platelet Endothelial Cell Adhesion Molecule-1: PECAM-1), a member of the Ig superfamily of cell adhesion molecules, is expressed by circulating platelets, monocytes, neutrophils, some T cells and endothelial cells, and modulates cell adhesion, endothelial cell migration and angiogenesis.

## Background

CD31 (Platelet Endothelial Cell Adhesion Molecule-1: PECAM-1), a member of the Ig superfamily of cell adhesion molecules, is expressed by circulating platelets, monocytes, neutrophils, some T cells and endothelial cells, and modulates cell adhesion, endothelial cell migration and angiogenesis.

Note: This product is for in vitro research use only