

## Alkaline Phosphatase Rabbit mAb

Catalog No: #58786

Package Size: #58786-1 50ul #58786-2 100ul

Orders: order@signalwayantibody.com

Support: tech@signalwayantibody.com

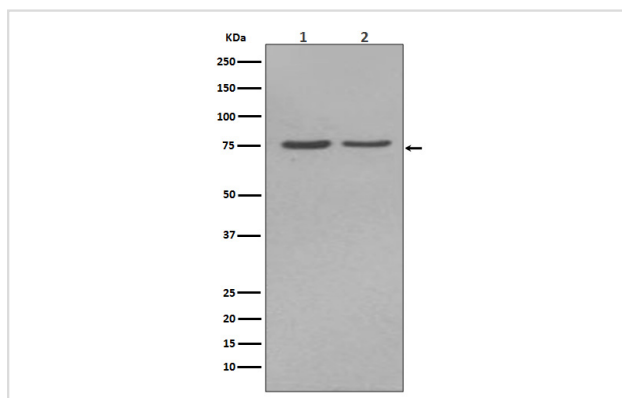
## Description

Product Name	Alkaline Phosphatase Rabbit mAb
Host Species	Rabbit
Clonality	Monoclonal
Isotype	Rabbit IgG
Purification	Affinity-chromatography
Applications	WB IHC ICC/IF IP FC
Species Reactivity	Human Mouse Rat
Specificity	Alkaline Phosphatase Antibody detects endogenous levels of total Alkaline Phosphatase
Immunogen Description	A synthesized peptide derived from human Alkaline Phosphatase
Other Names	Alkaline phosphatase, tissue-nonspecific isozyme; AP-TNAP; TNSALP; Alkaline phosphatase liver/bone/kidney isozyme; ALPL;
Accession No.	Uniprot:P05186
Uniprot	P05186
Formulation	Rabbit IgG in phosphate buffered saline , pH 7.4, 150mM NaCl, 0.02% sodium azide and 50% glycerol.
Storage	Store at +4°C short term. Store at -20°C long term. Avoid freeze / thaw cycle.

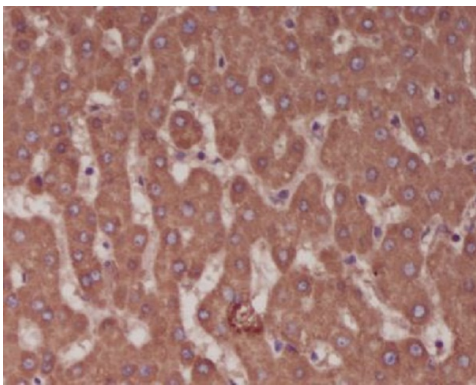
## Application Details

WB 1:5000~1:10000 IHC 1:50~1:200 ICC/IF 1:50~1:100 IP 1:50 FC 1:50

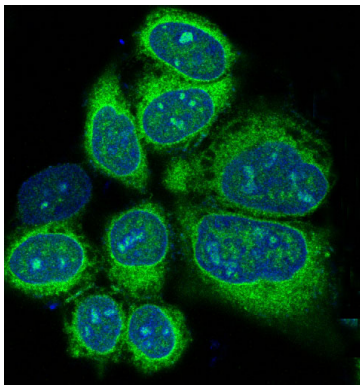
## Images



Western blot analysis of Alkaline Phosphatase expression in (1)HepG2 cell lysate; (2)JAR cell lysate.



Immunohistochemical analysis of paraffin-embedded human liver, using Alkaline Phosphatase Antibody.



Immunofluorescent analysis of HeLa cells, using Alkaline Phosphatase Antibody .

## Product Description

There are at least four distinct but related alkaline phosphatases: intestinal, placental, placental-like, and liver/bone/kidney (tissue non-specific). The first three are located together on chromosome 2, while the tissue non-specific form is located on chromosome 1. The product of this gene is a membrane bound glycosylated enzyme that is not expressed in any particular tissue and is, therefore, referred to as the tissue-nonspecific form of the enzyme.

## Background

There are at least four distinct but related alkaline phosphatases: intestinal, placental, placental-like, and liver/bone/kidney (tissue non-specific). The first three are located together on chromosome 2, while the tissue non-specific form is located on chromosome 1. The product of this gene is a membrane bound glycosylated enzyme that is not expressed in any particular tissue and is, therefore, referred to as the tissue-nonspecific form of the enzyme.

Note: This product is for in vitro research use only