

## Myosin light chain kinase Rabbit mAb

Catalog No: #58790

Package Size: #58790-1 50ul #58790-2 100ul

Orders: order@signalwayantibody.com

Support: tech@signalwayantibody.com

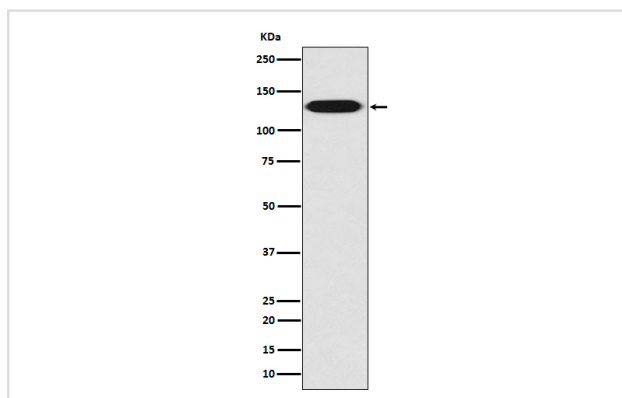
## Description

Product Name	Myosin light chain kinase Rabbit mAb
Host Species	Rabbit
Clonality	Monoclonal
Isotype	Rabbit IgG
Purification	Affinity-chromatography
Applications	WB IHC ICC/IF FC
Species Reactivity	Human Mouse Rat
Specificity	Myosin light chain kinase Antibody detects endogenous levels of total Myosin light chain kinase
Immunogen Description	A synthesized peptide derived from human Myosin light chain kinase
Other Names	KMLS; KRP; MLCK; MYLK; myosin light chain kinase, smooth muscle and non-muscle isozymes; myosin light polypeptide kinase; telokin;
Accession No.	Uniprot:Q15746
Uniprot	Q15746
Formulation	Rabbit IgG in phosphate buffered saline , pH 7.4, 150mM NaCl, 0.02% sodium azide and 50% glycerol.
Storage	Store at +4°C short term. Store at -20°C long term. Avoid freeze / thaw cycle.

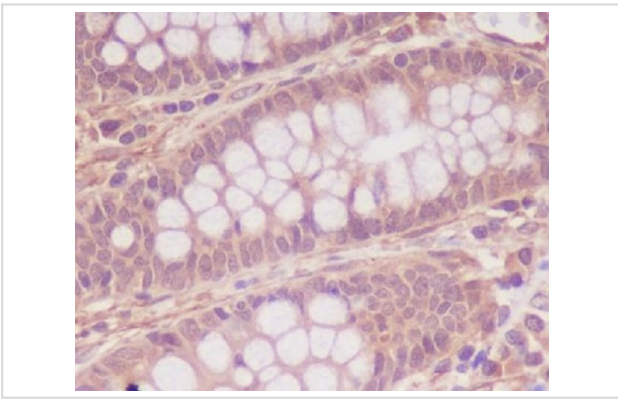
## Application Details

WB 1:500~1:2000 IHC 1:50~1:200 ICC/IF 1:50~1:200 FC 1:50

## Images



Western blot analysis of myosin light chain kinase expression in HUVEC cell lysate.



Immunohistochemical analysis of paraffin-embedded human colon, using Myosin light chain kinase Antibody.

## Product Description

Regulates actin-myosin interaction through a non-kinase activity. Phosphorylates PTK2B/PYK2 and myosin light-chains. Involved in the inflammatory response (e.g. apoptosis, vascular permeability, leukocyte diapedesis), cell motility and morphology, airway hyperreactivity and other activities relevant to asthma. Required for tonic airway smooth muscle contraction that is necessary for physiological and asthmatic airway resistance.

## Background

Regulates actin-myosin interaction through a non-kinase activity. Phosphorylates PTK2B/PYK2 and myosin light-chains. Involved in the inflammatory response (e.g. apoptosis, vascular permeability, leukocyte diapedesis), cell motility and morphology, airway hyperreactivity and other activities relevant to asthma. Required for tonic airway smooth muscle contraction that is necessary for physiological and asthmatic airway resistance.

Note: This product is for in vitro research use only