

Caspase-1 Rabbit mAb

Catalog No: #58791

Package Size: #58791-1 50ul #58791-2 100ul

Orders: order@signalwayantibody.com

Support: tech@signalwayantibody.com

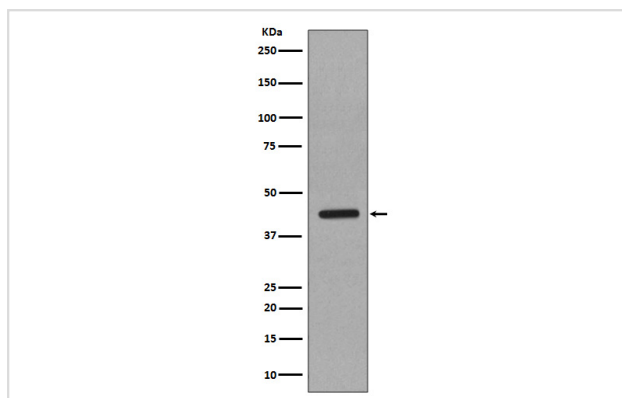
Description

Product Name	Caspase-1 Rabbit mAb
Host Species	Rabbit
Clonality	Monoclonal
Isotype	Rabbit IgG
Purification	Affinity-chromatography
Applications	WB IHC
Species Reactivity	Human Rat
Specificity	Caspase-1 Antibody detects endogenous levels of total Caspase-1
Immunogen Description	A synthesized peptide derived from human Caspase-1
Other Names	CASP-1; ICE; IL-1 beta converting enzyme; IL-1BC; IL1BCE; caspase-1;
Accession No.	Uniprot:P29466
Uniprot	P29466
Formulation	Rabbit IgG in phosphate buffered saline , pH 7.4, 150mM NaCl, 0.02% sodium azide and 50% glycerol.
Storage	Store at +4°C short term. Store at -20°C long term. Avoid freeze / thaw cycle.

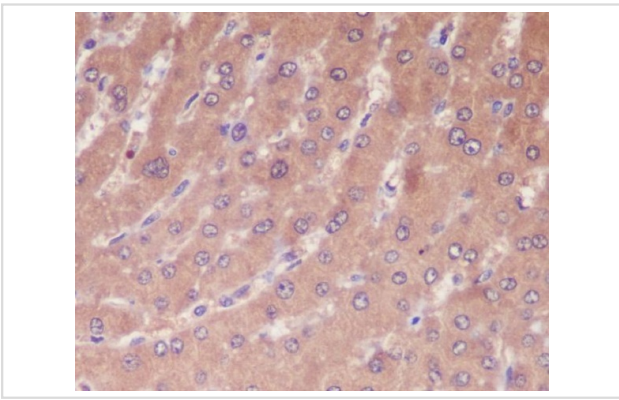
Application Details

WB 1:500~1:2000 IHC 1:50~1:200

Images



Western blot analysis of Caspase-1 in HeLa cell lysate.



Immunohistochemical analysis of paraffin-embedded human liver, using Caspase-1 Antibody.

Product Description

Thiol protease that cleaves IL-1 beta between an Asp and an Ala, releasing the mature cytokine which is involved in a variety of inflammatory processes. Important for defense against pathogens. Cleaves and activates sterol regulatory element binding proteins (SREBPs). Can also promote apoptosis.

Background

Thiol protease that cleaves IL-1 beta between an Asp and an Ala, releasing the mature cytokine which is involved in a variety of inflammatory processes. Important for defense against pathogens. Cleaves and activates sterol regulatory element binding proteins (SREBPs). Can also promote apoptosis.

Note: This product is for in vitro research use only