

Human IgG4 Rabbit mAb

Catalog No: #58795

Package Size: #58795-1 50ul #58795-2 100ul

Orders: order@signalwayantibody.com

Support: tech@signalwayantibody.com

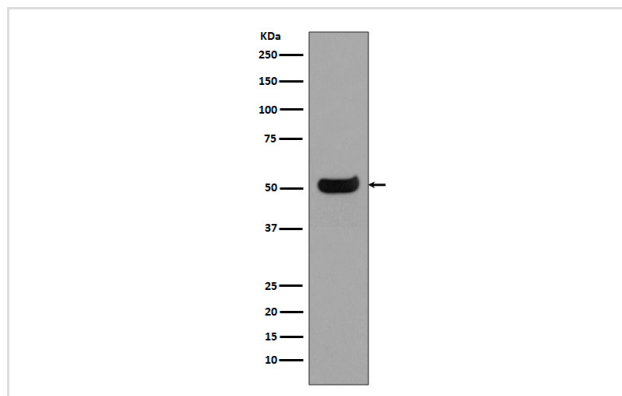
Description

Product Name	Human IgG4 Rabbit mAb
Host Species	Rabbit
Clonality	Monoclonal
Isotype	Rabbit IgG
Purification	Affinity-chromatography
Applications	WB IHC
Species Reactivity	Human
Specificity	Human IgG4 Antibody detects endogenous levels of total human IgG4
Immunogen Description	A synthesized peptide derived from human IgG4
Other Names	Ig gamma 4 chain C region; IGHG4; IGG4;
Accession No.	Uniprot:P01861
Uniprot	P01861
Formulation	Rabbit IgG in phosphate buffered saline , pH 7.4, 150mM NaCl, 0.02% sodium azide and 50% glycerol.
Storage	Store at +4°C short term. Store at -20°C long term. Avoid freeze / thaw cycle.

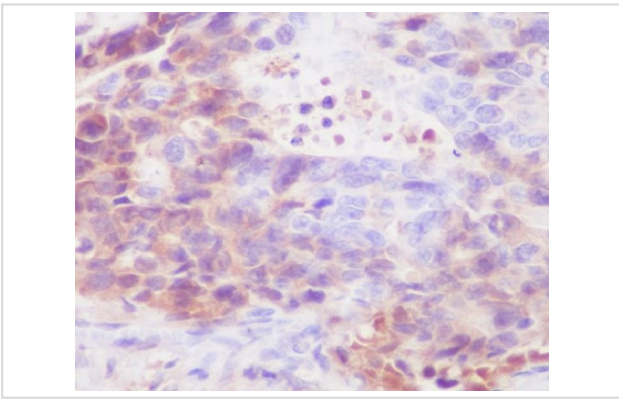
Application Details

WB 1:1000~1:2000 IHC 1:500~1:1000

Images



Western blot analysis of human IgG4 expression in Human spleen lysate.



Immunohistochemical analysis of paraffin-embedded human stomach carcinoma, using human IgG4 Antibody .

Product Description

IgG4 antibodies will dominate the IgG response in schistosomiasis, lymphatic filariasis, and in patients after allergen immunotherapy. Unlike the other IgG subclasses, IgG4 does not activate complement. A combined IgA-IgG4 deficiency has been associated with recurrent pyogenic infections.

Background

IgG4 antibodies will dominate the IgG response in schistosomiasis, lymphatic filariasis, and in patients after allergen immunotherapy. Unlike the other IgG subclasses, IgG4 does not activate complement. A combined IgA-IgG4 deficiency has been associated with recurrent pyogenic infections.

Note: This product is for in vitro research use only