

## IFNAR1 Rabbit mAb

Catalog No: #58800

Package Size: #58800-1 50ul #58800-2 100ul

Orders: order@signalwayantibody.com

Support: tech@signalwayantibody.com

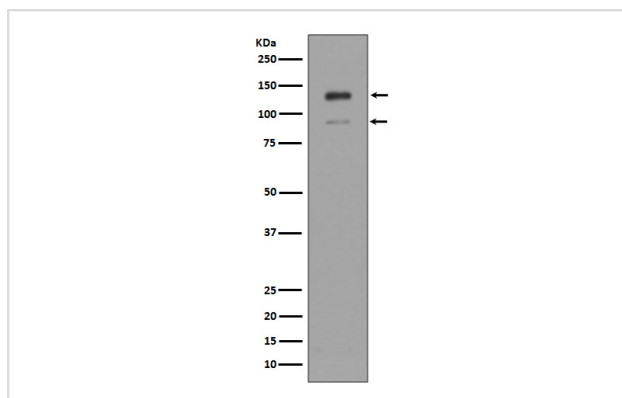
## Description

Product Name	IFNAR1 Rabbit mAb
Host Species	Rabbit
Clonality	Monoclonal
Isotype	Rabbit IgG
Purification	Affinity-chromatography
Applications	WB IP FC
Species Reactivity	Human
Specificity	IFNAR1 Antibody detects endogenous levels of total IFNAR1
Immunogen Description	A synthesized peptide derived from human IFNAR1
Other Names	AVP; IFRC; IFNAR; IFNBR; IFN-alpha-REC;
Accession No.	Uniprot:P17181
Uniprot	P17181
Formulation	Rabbit IgG in phosphate buffered saline , pH 7.4, 150mM NaCl, 0.02% sodium azide and 50% glycerol.
Storage	Store at +4°C short term. Store at -20°C long term. Avoid freeze / thaw cycle.

## Application Details

WB 1:500~1:2000 IP 1:50 FC 1:50

## Images



Western blot analysis of IFNAR1 expression in K562 cell lysate.

## Product Description

Component of the receptor for type I interferons, including interferons alpha, IFNB1 and IFNW1. Functions in general as heterodimer with IFNAR2. Type I interferon binding activates the JAK-STAT signaling cascade, and triggers tyrosine phosphorylation of a number of proteins including JAKs, TYK2, STAT proteins and the IFNR alpha- and beta-subunits themselves. Can form an active IFNB1 receptor by itself and activate a signaling cascade that does not involve activation of the JAK-STAT pathway.

## Background

---

Component of the receptor for type I interferons, including interferons alpha, IFNB1 and IFNW1. Functions in general as heterodimer with IFNAR2. Type I interferon binding activates the JAK-STAT signaling cascade, and triggers tyrosine phosphorylation of a number of proteins including JAKs, TYK2, STAT proteins and the IFNR alpha- and beta-subunits themselves. Can form an active IFNB1 receptor by itself and activate a signaling cascade that does not involve activation of the JAK-STAT pathway.

---

Note: This product is for in vitro research use only