

## Insulin Rabbit mAb

Catalog No: #58806

Package Size: #58806-1 50ul #58806-2 100ul

Orders: [order@signalwayantibody.com](mailto:order@signalwayantibody.com)Support: [tech@signalwayantibody.com](mailto:tech@signalwayantibody.com)

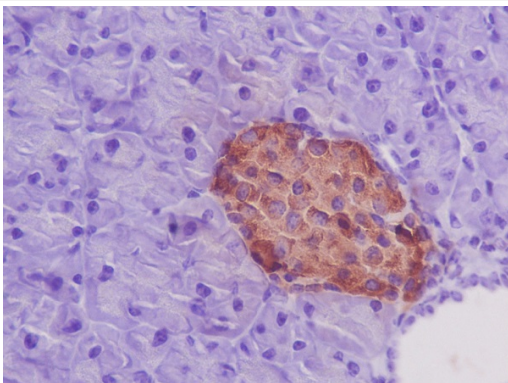
## Description

Product Name	Insulin Rabbit mAb
Host Species	Rabbit
Clonality	Monoclonal
Isotype	Rabbit IgG
Purification	Affinity-chromatography
Applications	IHC ICC/IF
Species Reactivity	Human Mouse Rat
Specificity	Insulin Antibody detects endogenous levels of total Insulin
Immunogen Description	A synthesized peptide derived from human Insulin
Other Names	ILPR; IRDN; IDDM2; MODY10; Insulin; Insulin; INS;
Accession No.	Uniprot:P01308
Uniprot	P01308
Formulation	Rabbit IgG in phosphate buffered saline , pH 7.4, 150mM NaCl, 0.02% sodium azide and 50% glycerol.
Storage	Store at +4°C short term. Store at -20°C long term. Avoid freeze / thaw cycle.

## Application Details

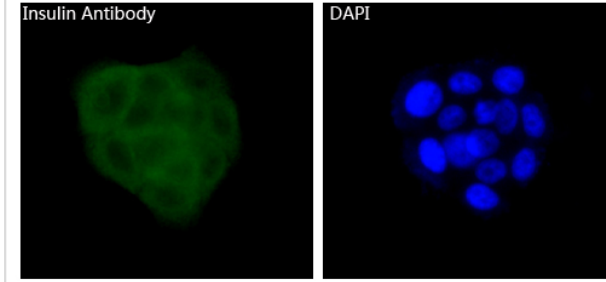
IHC 1:500~1:1000 ICC/IF 1:50~1:200

## Images



Immunohistochemical analysis of paraffin-embedded mouse pancreas, using Insulin Antibody.

Immunofluorescent analysis of BxPC-3 cells, using Insulin Antibody .



## Product Description

Insulin decreases blood glucose concentration. It increases cell permeability to monosaccharides, amino acids and fatty acids. It accelerates glycolysis, the pentose phosphate cycle, and glycogen synthesis in liver.

## Background

Insulin decreases blood glucose concentration. It increases cell permeability to monosaccharides, amino acids and fatty acids. It accelerates glycolysis, the pentose phosphate cycle, and glycogen synthesis in liver.

Note: This product is for in vitro research use only