

## Hsp70 Rabbit mAb

Catalog No: #58821

Package Size: #58821-1 50ul #58821-2 100ul

Orders: order@signalwayantibody.com

Support: tech@signalwayantibody.com

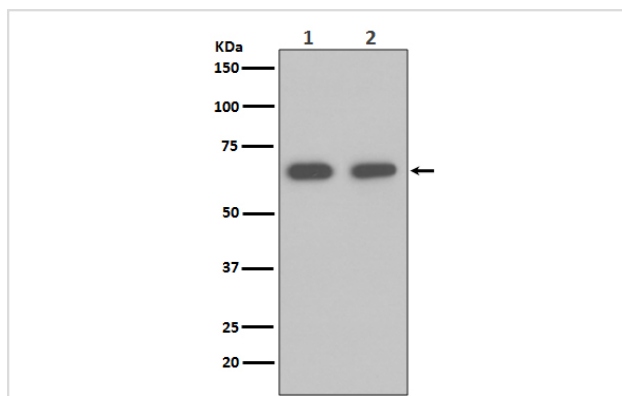
## Description

Product Name	Hsp70 Rabbit mAb
Host Species	Rabbit
Clonality	Monoclonal
Isotype	Rabbit IgG
Purification	Affinity-chromatography
Applications	WB IHC ICC/IF FC
Species Reactivity	Human Mouse Rat
Specificity	Hsp70 Antibody detects endogenous levels of total Hsp70
Immunogen Description	A synthesized peptide derived from human Hsp70
Other Names	HSP72; HSPA1; HSP70I; HSP70-1; HSP70-1A; HSPA1A;
Accession No.	Uniprot:P0DMV8
Uniprot	P0DMV8
Formulation	Rabbit IgG in phosphate buffered saline , pH 7.4, 150mM NaCl, 0.02% sodium azide and 50% glycerol.
Storage	Store at +4°C short term. Store at -20°C long term. Avoid freeze / thaw cycle.

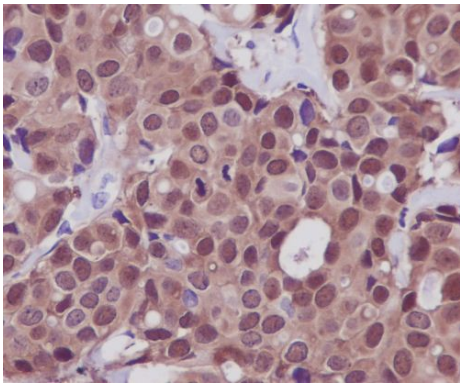
## Application Details

WB 1:500~1:2000 IHC 1:100~1:500 ICC/IF 1:50~1:100 FC 1:100

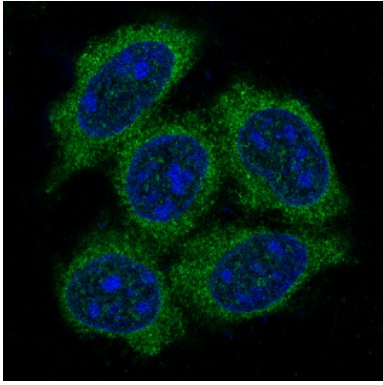
## Images



Western blot analysis of HSP70 expression in (1) K562 cell lysate; (2) 293T cell lysate.



Immunohistochemical analysis of paraffin-embedded human breast, using Hsp70 Antibody .



Immunofluorescent analysis of HeLa cells, using Hsp70 Antibody .

## Product Description

In conjunction with other heat shock proteins, this protein stabilizes existing proteins against aggregation and mediates the folding of newly translated proteins in the cytosol and in organelles. It is also involved in the ubiquitin-proteasome pathway through interaction with the AU-rich element RNA-binding protein 1. The gene is located in the major histocompatibility complex class III region, in a cluster with two closely related genes which encode similar proteins.

## Background

In conjunction with other heat shock proteins, this protein stabilizes existing proteins against aggregation and mediates the folding of newly translated proteins in the cytosol and in organelles. It is also involved in the ubiquitin-proteasome pathway through interaction with the AU-rich element RNA-binding protein 1. The gene is located in the major histocompatibility complex class III region, in a cluster with two closely related genes which encode similar proteins.

**Note:** This product is for in vitro research use only