

PI 3 Kinase p55 gamma Rabbit mAb

Catalog No: #58825

Package Size: #58825-1 50ul #58825-2 100ul

Orders: order@signalwayantibody.com

Support: tech@signalwayantibody.com

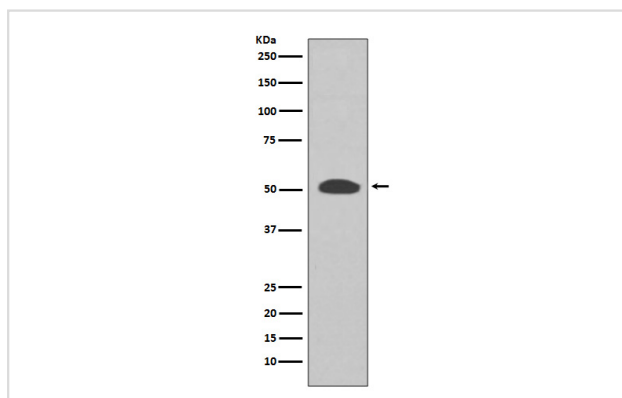
Description

Product Name	PI 3 Kinase p55 gamma Rabbit mAb
Host Species	Rabbit
Clonality	Monoclonal
Isotype	Rabbit IgG
Purification	Affinity-chromatography
Applications	WB IHC ICC/IF
Species Reactivity	Human Mouse Rat
Specificity	PI 3 Kinase p55 gamma Antibody detects endogenous levels of total PI 3 Kinase p55 gamma
Immunogen Description	A synthesized peptide derived from human PI 3 Kinase p55 gamma
Other Names	GRB1, P85A, PI3-kinase p85-alpha subunit, PI3K, PI3K p85-alpha; P55G, PI3-kinase p85-gamma subunit, PI3K p85-gamma,
Accession No.	Uniprot:Q92569
Uniprot	Q92569
Formulation	Rabbit IgG in phosphate buffered saline , pH 7.4, 150mM NaCl, 0.02% sodium azide and 50% glycerol.
Storage	Store at +4°C short term. Store at -20°C long term. Avoid freeze / thaw cycle.

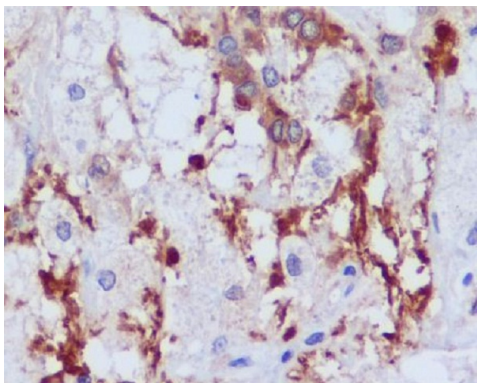
Application Details

WB 1:500~1:1000 IHC 1:50~1:200 ICC/IF 1:50~1:200

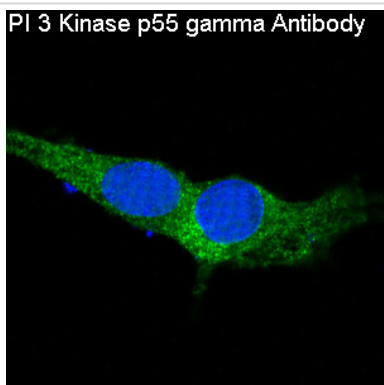
Images



Western blot analysis of PI 3 Kinase p55 gamma expression in SH-SY5Y cell lysate.



Immunohistochemical analysis of paraffin-embedded human astrocytoma, using PI 3 Kinase p55 gamma Antibody.



Immunofluorescent analysis of C6 cells, using PI 3 Kinase p55 gamma Antibody .

Product Description

Binds to activated (phosphorylated) protein-tyrosine kinases through its SH2 domain and regulates their kinase activity. During insulin stimulation, it also binds to IRS-1. Highest levels in brain and testis. Lower levels in adipose tissue, kidney, heart, lung and skeletal muscle.

Background

Binds to activated (phosphorylated) protein-tyrosine kinases through its SH2 domain and regulates their kinase activity. During insulin stimulation, it also binds to IRS-1. Highest levels in brain and testis. Lower levels in adipose tissue, kidney, heart, lung and skeletal muscle.

Note: This product is for in vitro research use only