

## Integrin alpha 6 Rabbit mAb

Catalog No: #58828

Package Size: #58828-1 50ul #58828-2 100ul

Orders: order@signalwayantibody.com

Support: tech@signalwayantibody.com

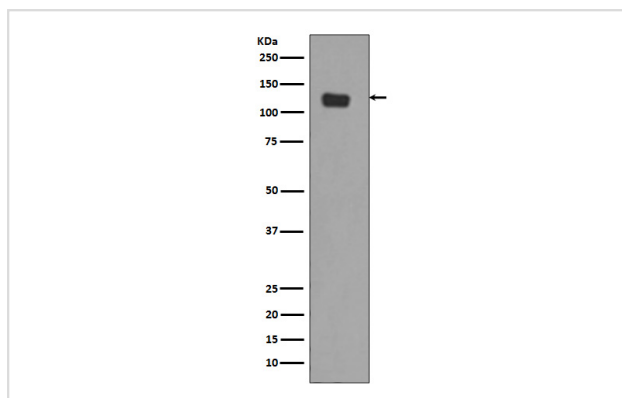
## Description

Product Name	Integrin alpha 6 Rabbit mAb
Host Species	Rabbit
Clonality	Monoclonal
Isotype	Rabbit IgG
Purification	Affinity-chromatography
Applications	WB IHC
Species Reactivity	Human Mouse Rat
Specificity	Integrin alpha 6 Antibody detects endogenous levels of total Integrin alpha 6
Immunogen Description	A synthesized peptide derived from human Integrin alpha 6
Other Names	ITGA6; CD49 antigen-like family member F; VLA-6; CD49f;
Accession No.	Uniprot:P23229
Uniprot	P23229
Formulation	Rabbit IgG in phosphate buffered saline , pH 7.4, 150mM NaCl, 0.02% sodium azide and 50% glycerol.
Storage	Store at +4°C short term. Store at -20°C long term. Avoid freeze / thaw cycle.

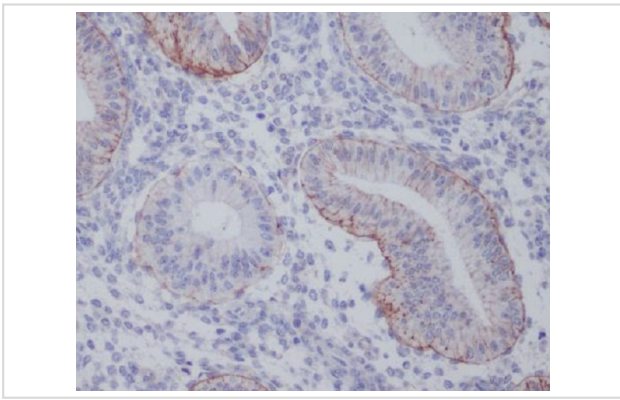
## Application Details

WB 1:500~1:2000 IHC 1:50~1:100

## Images



Western blot analysis of Integrin alpha 6 expression in SW480 cell lysate.



Immunohistochemical analysis of paraffin-embedded human uterus, using Integrin alpha 6 Antibody.

## Product Description

Integrin alpha-6/beta-1 is a receptor for laminin on platelets. Integrin alpha-6/beta-4 is a receptor for laminin in epithelial cells and it plays a critical structural role in the hemidesmosome.

## Background

Integrin alpha-6/beta-1 is a receptor for laminin on platelets. Integrin alpha-6/beta-4 is a receptor for laminin in epithelial cells and it plays a critical structural role in the hemidesmosome.

Note: This product is for in vitro research use only