

M6PR Rabbit mAb

Catalog No: #58832

Package Size: #58832-1 50ul #58832-2 100ul

Orders: order@signalwayantibody.comSupport: tech@signalwayantibody.com

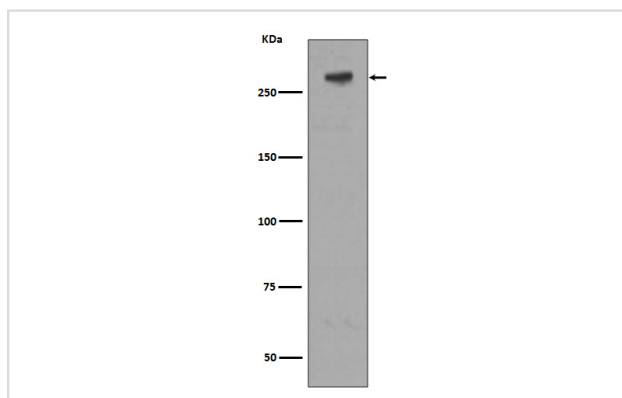
Description

Product Name	M6PR Rabbit mAb
Host Species	Rabbit
Clonality	Monoclonal
Isotype	Rabbit IgG
Purification	Affinity-chromatography
Applications	WB IHC ICC/IF IP FC
Species Reactivity	Human Mouse Rat
Specificity	M6PR Antibody detects endogenous levels of total M6PR
Immunogen Description	A synthesized peptide derived from human M6PR
Other Names	IGF2R; CI Man-6-P receptor; CI-MPR; M6PR; MPR 300; Insulin-like growth factor 2 receptor; M6P/IGF2R; CD222;
Accession No.	Uniprot:P11717
Uniprot	P11717
Formulation	Rabbit IgG in phosphate buffered saline , pH 7.4, 150mM NaCl, 0.02% sodium azide and 50% glycerol.
Storage	Store at +4°C short term. Store at -20°C long term. Avoid freeze / thaw cycle.

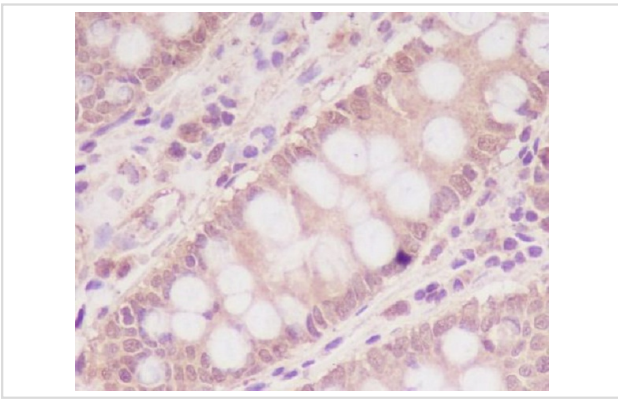
Application Details

WB 1:5000~1:20000 IHC 1:50~1:200 ICC/IF 1:50~1:200 IP 1:30 FC 1:100

Images



Western blot analysis of extracts of M6PR expression in Jurkat cell lysate.



Immunohistochemical analysis of paraffin-embedded human colon, using M6PR Antibody.

Product Description

Transport of phosphorylated lysosomal enzymes from the Golgi complex and the cell surface to lysosomes. Lysosomal enzymes bearing phosphomannosyl residues bind specifically to mannose-6-phosphate receptors in the Golgi apparatus and the resulting receptor-ligand complex is transported to an acidic prelysosomal compartment where the low pH mediates the dissociation of the complex. This receptor also binds IGF2. Acts as a positive regulator of T-cell coactivation, by binding DPP4.

Background

Transport of phosphorylated lysosomal enzymes from the Golgi complex and the cell surface to lysosomes. Lysosomal enzymes bearing phosphomannosyl residues bind specifically to mannose-6-phosphate receptors in the Golgi apparatus and the resulting receptor-ligand complex is transported to an acidic prelysosomal compartment where the low pH mediates the dissociation of the complex. This receptor also binds IGF2. Acts as a positive regulator of T-cell coactivation, by binding DPP4.

Note: This product is for in vitro research use only