

Prohibitin Rabbit mAb

Catalog No: #58834

Package Size: #58834-1 50ul #58834-2 100ul

Orders: order@signalwayantibody.com

Support: tech@signalwayantibody.com

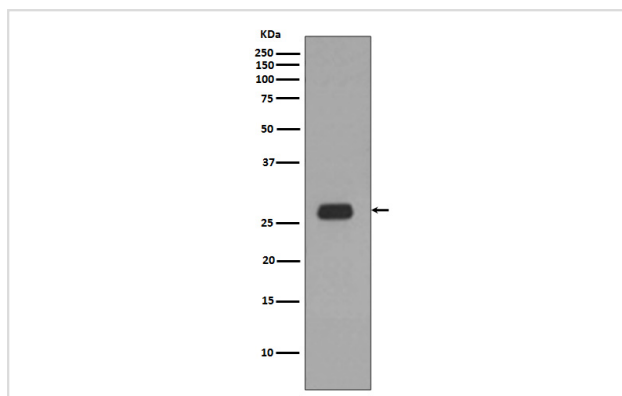
Description

Product Name	Prohibitin Rabbit mAb
Host Species	Rabbit
Clonality	Monoclonal
Isotype	Rabbit IgG
Purification	Affinity-chromatography
Applications	WB IHC ICC/IF IP FC
Species Reactivity	Human Mouse Rat
Specificity	Prohibitin Antibody detects endogenous levels of total Prohibitin
Immunogen Description	A synthesized peptide derived from human Prohibitin
Other Names	PHB; PHB1; HEL 215; Epididymis secretory sperm binding protein Li 54e;
Accession No.	Uniprot:P35232
Uniprot	P35232
Formulation	Rabbit IgG in phosphate buffered saline , pH 7.4, 150mM NaCl, 0.02% sodium azide and 50% glycerol.
Storage	Store at +4°C short term. Store at -20°C long term. Avoid freeze / thaw cycle.

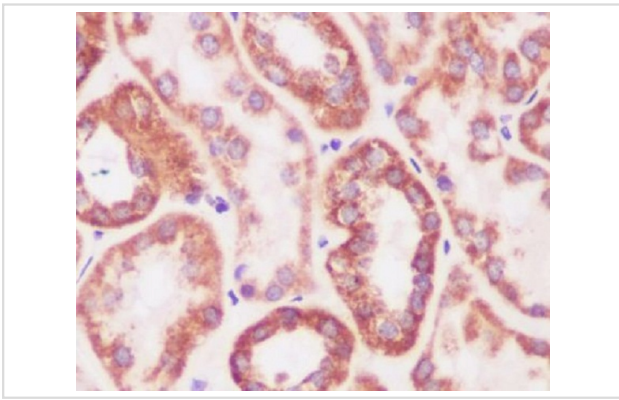
Application Details

WB 1:500~1:2000 IHC 1:50~1:200 ICC/IF 1:50~1:200 IP 1:30 FC 1:30

Images



Western blot analysis of Prohibitin expression in Ramos cell lysate.



Immunohistochemical analysis of paraffin-embedded human kidney, using Prohibitin Antibody.

Product Description

PHB1 is 30kDa tumor suppressor protein involved in cell cycle control. PHB1 has been found in mitochondria, the nucleus and the plasma membrane, as well as extracellularly in circulation. In mitochondria prohibitins mainly exist as membrane-bound ring complexes and function as chaperones maintaining mitochondrial protein stability during protein synthesis and transportation.

Background

PHB1 is 30kDa tumor suppressor protein involved in cell cycle control. PHB1 has been found in mitochondria, the nucleus and the plasma membrane, as well as extracellularly in circulation. In mitochondria prohibitins mainly exist as membrane-bound ring complexes and function as chaperones maintaining mitochondrial protein stability during protein synthesis and transportation.

Note: This product is for in vitro research use only