

## Collagen XVII Rabbit mAb

Catalog No: #58836

Package Size: #58836-1 50ul #58836-2 100ul

Orders: [order@signalwayantibody.com](mailto:order@signalwayantibody.com)Support: [tech@signalwayantibody.com](mailto:tech@signalwayantibody.com)

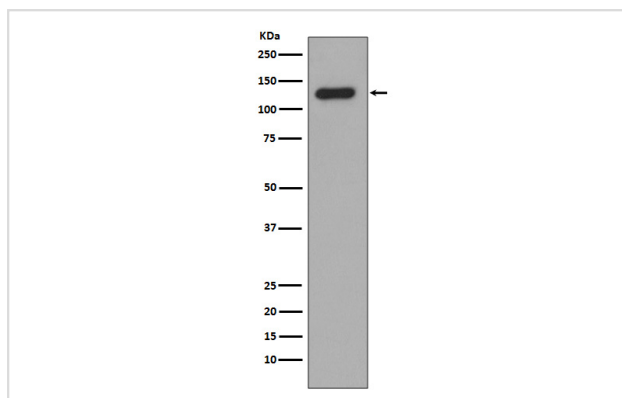
## Description

Product Name	Collagen XVII Rabbit mAb
Host Species	Rabbit
Clonality	Monoclonal
Isotype	Rabbit IgG
Purification	Affinity-chromatography
Applications	WB IHC ICC/IF IP
Species Reactivity	Human Mouse Rat
Specificity	Collagen XVII Antibody detects endogenous levels of total Collagen XVII
Immunogen Description	A synthesized peptide derived from human Collagen XVII
Other Names	BP180; BPA 2; BPAG2; COL17A1; Collagen 17; CollagenXVII; LAD1
Accession No.	Uniprot:Q9UMD9
Uniprot	Q9UMD9
Formulation	Rabbit IgG in phosphate buffered saline , pH 7.4, 150mM NaCl, 0.02% sodium azide and 50% glycerol.
Storage	Store at +4°C short term. Store at -20°C long term. Avoid freeze / thaw cycle.

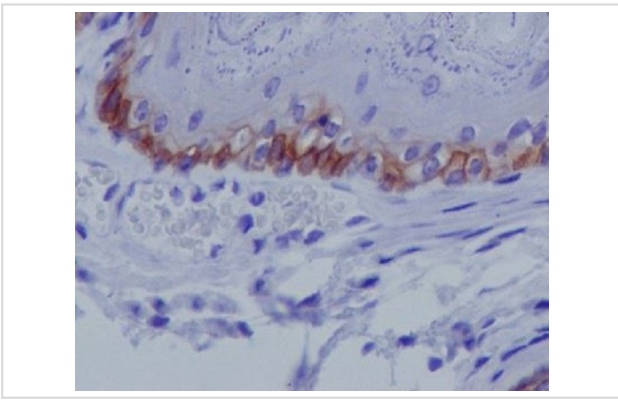
## Application Details

WB 1:500~1:2000 IHC 1:50~1:200 ICC/IF 1:50~1:200 IP 1:30

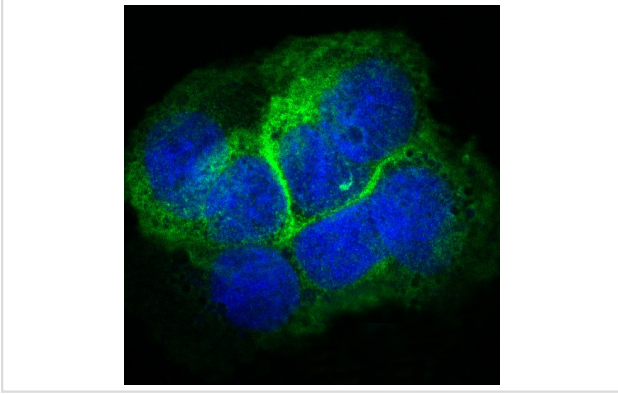
## Images



Western blot analysis of Collagen XVII expression in Human skin lysate.



Immunohistochemical analysis of paraffin-embedded mouse skin, using Collagen XVII Antibody.



Immunofluorescent analysis of A431 cells, using Collagen XVII Antibody .

## Product Description

May play a role in the integrity of hemidesmosome and the attachment of basal keratinocytes to the underlying basement membrane. The 120 kDa linear IgA disease antigen is an anchoring filament component involved in dermal-epidermal cohesion. Is the target of linear IgA bullous dermatosis autoantibodies.

## Background

May play a role in the integrity of hemidesmosome and the attachment of basal keratinocytes to the underlying basement membrane. The 120 kDa linear IgA disease antigen is an anchoring filament component involved in dermal-epidermal cohesion. Is the target of linear IgA bullous dermatosis autoantibodies.

Note: This product is for in vitro research use only