

Aurora A Rabbit mAb

Catalog No: #58837

Package Size: #58837-1 50ul #58837-2 100ul

Orders: order@signalwayantibody.com

Support: tech@signalwayantibody.com

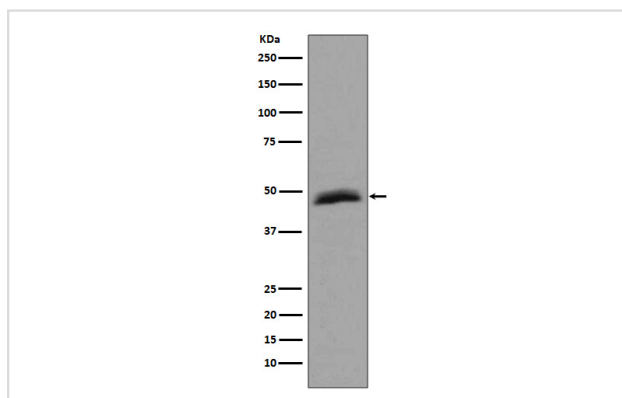
Description

Product Name	Aurora A Rabbit mAb
Host Species	Rabbit
Clonality	Monoclonal
Isotype	Rabbit IgG
Purification	Affinity-chromatography
Applications	WB ICC/IF FC
Species Reactivity	Human Mouse
Specificity	Aurora A Antibody detects endogenous levels of total Aurora A
Immunogen Description	A synthesized peptide derived from human Aurora A
Other Names	AIK, ARK1, AYK1, Aurora-A, Aurora-related kinase 1, BTAK, IAK1, Ipl1- and aurora-related kinase 1, STK15, STK6, Serine/threonine kinase 15
Accession No.	Uniprot:O14965
Uniprot	O14965
Formulation	Rabbit IgG in phosphate buffered saline , pH 7.4, 150mM NaCl, 0.02% sodium azide and 50% glycerol.
Storage	Store at +4°C short term. Store at -20°C long term. Avoid freeze / thaw cycle.

Application Details

WB 1:500~1:2000 ICC/IF 1:50~1:200 FC 1: 200

Images



Western blot analysis of Aurora A expression in HepG2 cell lysate.

Product Description

Mitotic serine/threonine kinases that contributes to the regulation of cell cycle progression. Associates with the centrosome and the spindle microtubules during mitosis and plays a critical role in various mitotic events including the establishment of mitotic spindle, centrosome duplication, centrosome separation as well as maturation, chromosomal alignment, spindle assembly checkpoint, and cytokinesis.

Background

Mitotic serine/threonine kinases that contributes to the regulation of cell cycle progression. Associates with the centrosome and the spindle microtubules during mitosis and plays a critical role in various mitotic events including the establishment of mitotic spindle, centrosome duplication, centrosome separation as well as maturation, chromosomal alignment, spindle assembly checkpoint, and cytokinesis.

Note: This product is for in vitro research use only