

ASH2L Rabbit mAb

Catalog No: #58841

Package Size: #58841-1 50ul #58841-2 100ul

Orders: order@signalwayantibody.com

Support: tech@signalwayantibody.com

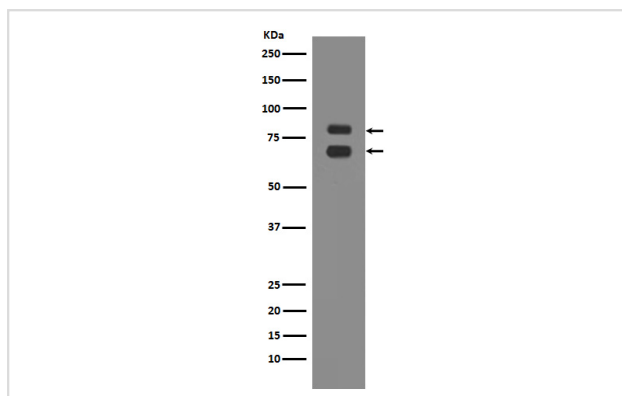
Description

Product Name	ASH2L Rabbit mAb
Host Species	Rabbit
Clonality	Monoclonal
Isotype	Rabbit IgG
Purification	Affinity-chromatography
Applications	WB IHC ICC/IF
Species Reactivity	Human Mouse Rat
Specificity	ASH2L Antibody detects endogenous levels of total ASH2L
Immunogen Description	A synthesized peptide derived from human ASH2L
Other Names	ASH 2; ASH2; ASH2 LIKE; ASH2 like protein; ASH2-like protein; Ash2l; ASH2L1; ASH2L2; Bre 2; Bre2;
Accession No.	Uniprot:Q9UBL3
Uniprot	Q9UBL3
Formulation	Rabbit IgG in phosphate buffered saline , pH 7.4, 150mM NaCl, 0.02% sodium azide and 50% glycerol.
Storage	Store at +4°C short term. Store at -20°C long term. Avoid freeze / thaw cycle.

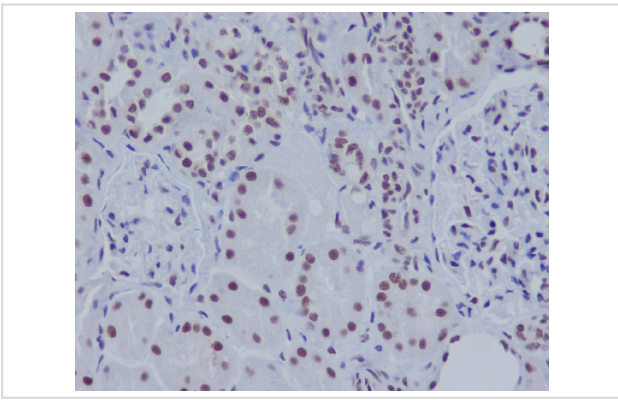
Application Details

WB 1:500~1:2000 IHC 1:50~1:200 ICC/IF 1:50~1:200

Images



Western blot analysis of ASH2L expression in K562 cell lysate.



Immunohistochemical analysis of paraffin-embedded human kidney, using ASH2L Antibody.

Product Description

Component of the Set1/Ash2 histone methyltransferase (HMT) complex, a complex that specifically methylates 'Lys-4' of histone H3, but not if the neighboring 'Lys-9' residue is already methylated. As part of the MLL1/MLL complex it is involved in methylation and dimethylation at 'Lys-4' of histone H3. May function as a transcriptional regulator. May play a role in hematopoiesis.

Background

Component of the Set1/Ash2 histone methyltransferase (HMT) complex, a complex that specifically methylates 'Lys-4' of histone H3, but not if the neighboring 'Lys-9' residue is already methylated. As part of the MLL1/MLL complex it is involved in methylation and dimethylation at 'Lys-4' of histone H3. May function as a transcriptional regulator. May play a role in hematopoiesis.

Note: This product is for in vitro research use only