

TOMM20 Rabbit mAb

Catalog No: #58842

Package Size: #58842-1 50ul #58842-2 100ul

Orders: order@signalwayantibody.com

Support: tech@signalwayantibody.com

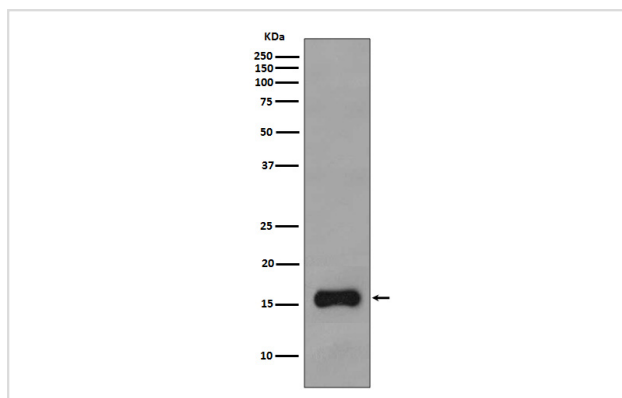
Description

Product Name	TOMM20 Rabbit mAb
Host Species	Rabbit
Clonality	Monoclonal
Isotype	Rabbit IgG
Purification	Affinity-chromatography
Applications	WB IHC ICC/IF FC
Species Reactivity	Human Mouse Rat
Specificity	TOMM20 Antibody detects endogenous levels of total TOMM20
Immunogen Description	A synthesized peptide derived from human TOMM20
Other Names	Mitochondrial import receptor subunit TOM20 homolog; Outer mitochondrial membrane receptor Tom20;
Accession No.	Uniprot:Q15388
Uniprot	Q15388
Formulation	Rabbit IgG in phosphate buffered saline , pH 7.4, 150mM NaCl, 0.02% sodium azide and 50% glycerol.
Storage	Store at +4°C short term. Store at -20°C long term. Avoid freeze / thaw cycle.

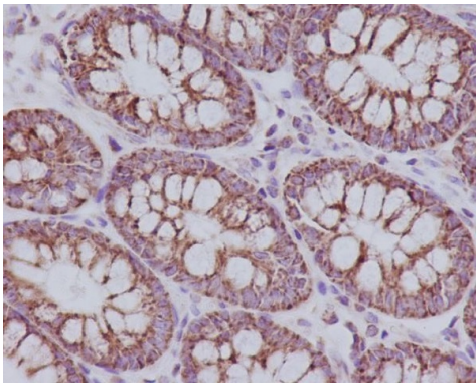
Application Details

WB 1:500~1:2000 IHC 1:50~1:200 ICC/IF 1:50~1:200 FC 1:100

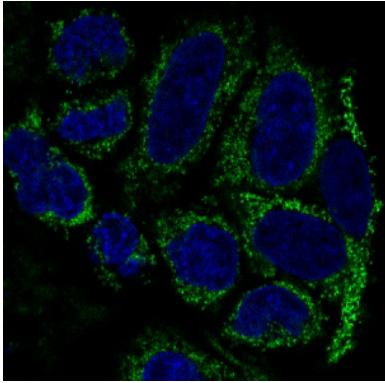
Images



Western blot analysis of TOMM20 expression in HepG2 cell lysate.



Immunohistochemical analysis of paraffin-embedded human colon, using TOMM20 Antibody.



Immunofluorescent analysis of HeLa cells, using TOMM20 Antibody .

Product Description

Central component of the receptor complex responsible for the recognition and translocation of cytosolically synthesized mitochondrial preproteins. Together with TOM22 functions as the transit peptide receptor at the surface of the mitochondrion outer membrane and facilitates the movement of preproteins into the TOM40 translocation pore.

Background

Central component of the receptor complex responsible for the recognition and translocation of cytosolically synthesized mitochondrial preproteins. Together with TOM22 functions as the transit peptide receptor at the surface of the mitochondrion outer membrane and facilitates the movement of preproteins into the TOM40 translocation pore.

Note: This product is for in vitro research use only