

## Rab5 Rabbit mAb

Catalog No: #58844

Package Size: #58844-1 50ul #58844-2 100ul

Orders: order@signalwayantibody.com

Support: tech@signalwayantibody.com

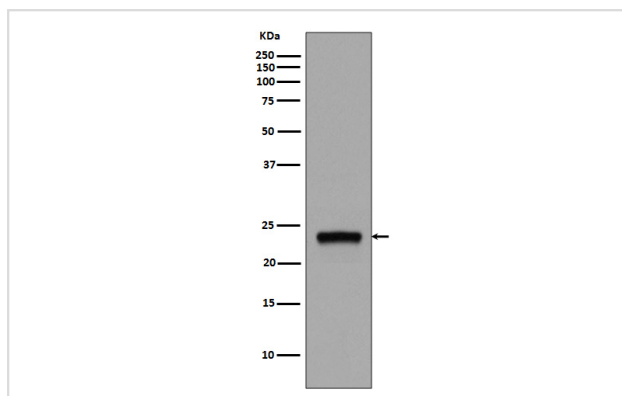
## Description

Product Name	Rab5 Rabbit mAb
Host Species	Rabbit
Clonality	Monoclonal
Isotype	Rabbit IgG
Purification	Affinity-chromatography
Applications	WB IHC
Species Reactivity	Human Mouse Rat
Specificity	Rab5 Antibody detects endogenous levels of total Rab5
Immunogen Description	A synthesized peptide derived from human Rab5
Other Names	RAB5A;RAB5; RAS associated protein RAB5A; Ras related protein Rab 5A;
Accession No.	Uniprot:P20339
Uniprot	P20339
Formulation	Rabbit IgG in phosphate buffered saline , pH 7.4, 150mM NaCl, 0.02% sodium azide and 50% glycerol.
Storage	Store at +4°C short term. Store at -20°C long term. Avoid freeze / thaw cycle.

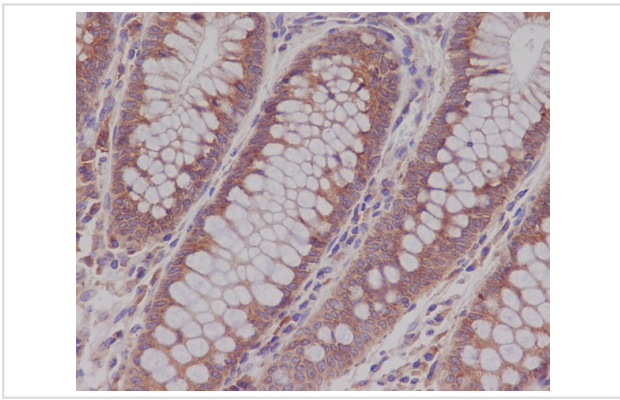
## Application Details

WB 1:500~1:2000 IHC 1:50~1:200

## Images



Western blot analysis of Rab5 expression in MCF-7 cell lysate.



Immunohistochemical analysis of paraffin-embedded human colon, using Rab5 Antibody.

## Product Description

Rab5 is a member of the Ras superfamily of small Rab GTPases. Rab5 is localized at the plasma membrane and early endosomes and functions as a key regulator of vesicular trafficking during early endocytosis (1). The conformational change between Rab5 GTP/GDP states is essential for its biological function as a rate limiting regulator at multiple steps during endocytosis.

## Background

Rab5 is a member of the Ras superfamily of small Rab GTPases. Rab5 is localized at the plasma membrane and early endosomes and functions as a key regulator of vesicular trafficking during early endocytosis (1). The conformational change between Rab5 GTP/GDP states is essential for its biological function as a rate limiting regulator at multiple steps during endocytosis.

Note: This product is for in vitro research use only