

AKT1 Rabbit mAb

Catalog No: #58859

Package Size: #58859-1 50ul #58859-2 100ul

Orders: order@signalwayantibody.com

Support: tech@signalwayantibody.com

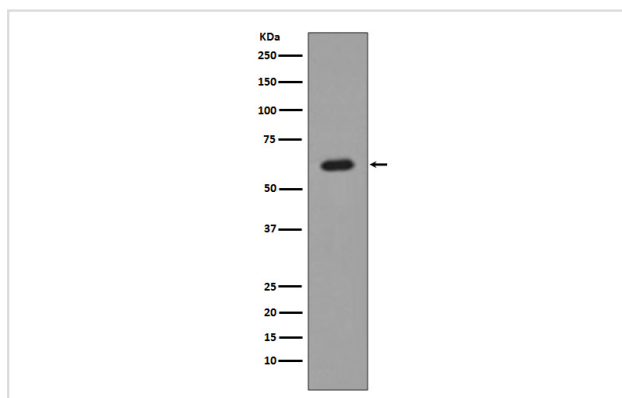
Description

Product Name	AKT1 Rabbit mAb
Host Species	Rabbit
Clonality	Monoclonal
Isotype	Rabbit IgG
Purification	Affinity-chromatography
Applications	WB IHC ICC/IF IP FC
Species Reactivity	Human Mouse Rat
Specificity	AKT1 Antibody detects endogenous levels of total AKT1
Immunogen Description	A synthesized peptide derived from human AKT1
Other Names	AKT; AKT1 kinase; C-AKT; PKB; PKB-alpha; Protein kinase B; RAC; RAC-PK-alpha; RAC-alpha serine/threonine kinase, kinase Akt1;
Accession No.	Uniprot:P31749
Uniprot	P31749
Formulation	Rabbit IgG in phosphate buffered saline , pH 7.4, 150mM NaCl, 0.02% sodium azide and 50% glycerol.
Storage	Store at +4°C short term. Store at -20°C long term. Avoid freeze / thaw cycle.

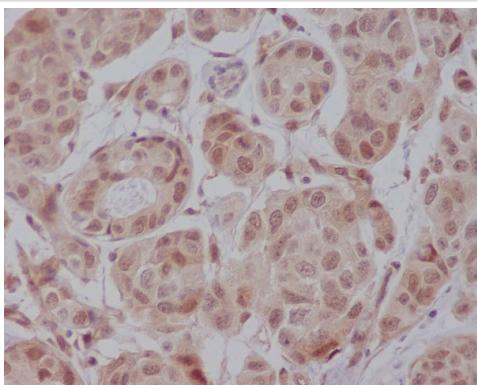
Application Details

WB 1:500~1:2000 IHC 1:50~1:200 ICC/IF 1:50~1:200 IP 1:50

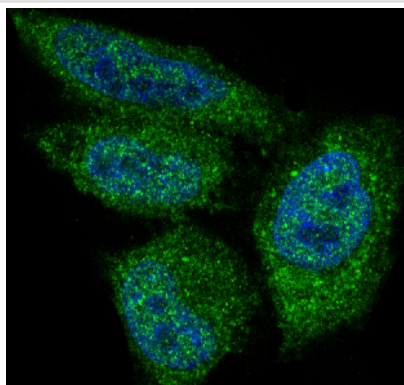
Images



Western blot analysis of AKT1 expression in MCF-7 cell lysate.



Immunohistochemical analysis of paraffin-embedded human colon, using AKT1 Antibody.



Immunofluorescent analysis of HeLa cells, using AKT1 Antibody.

Product Description

Akt, also referred to as PKB or Rac, plays a critical role in controlling survival and apoptosis. This protein kinase is activated by insulin and various growth and survival factors to function in a wortmannin-sensitive pathway involving PI3 kinase. Akt is activated by phospholipid binding and activation loop phosphorylation at Thr308 by PDK1 and by phosphorylation within the carboxy terminus at Ser473.

Background

Akt, also referred to as PKB or Rac, plays a critical role in controlling survival and apoptosis. This protein kinase is activated by insulin and various growth and survival factors to function in a wortmannin-sensitive pathway involving PI3 kinase. Akt is activated by phospholipid binding and activation loop phosphorylation at Thr308 by PDK1 and by phosphorylation within the carboxy terminus at Ser473.

Note: This product is for in vitro research use only