

## FLI1 Rabbit mAb

Catalog No: #58865

Package Size: #58865-1 50ul #58865-2 100ul

Orders: [order@signalwayantibody.com](mailto:order@signalwayantibody.com)Support: [tech@signalwayantibody.com](mailto:tech@signalwayantibody.com)

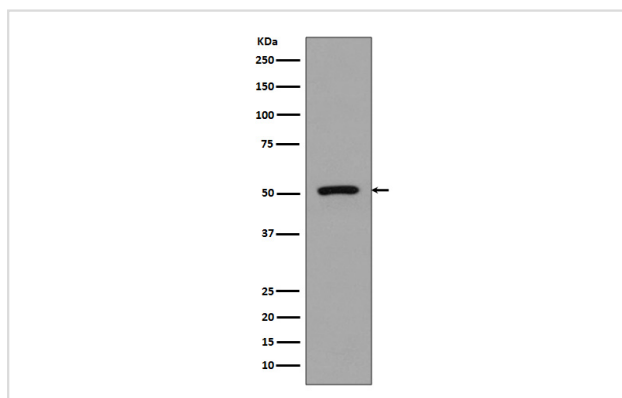
## Description

Product Name	FLI1 Rabbit mAb
Host Species	Rabbit
Clonality	Monoclonal
Isotype	Rabbit IgG
Purification	Affinity-chromatography
Applications	WB IHC
Species Reactivity	Human Mouse
Specificity	FLI1 Antibody detects endogenous levels of total FLI1
Immunogen Description	A synthesized peptide derived from human FLI1
Other Names	EWSR2; FLI1; Friend leukemia integration 1 transcription factor; Friend leukemia virus integration 1; Proto-oncogene Fli-1; SIC-1; Transcription factor ERGB;
Accession No.	Uniprot:Q01543
Uniprot	Q01543
Formulation	Rabbit IgG in phosphate buffered saline , pH 7.4, 150mM NaCl, 0.02% sodium azide and 50% glycerol.
Storage	Store at +4°C short term. Store at -20°C long term. Avoid freeze / thaw cycle.

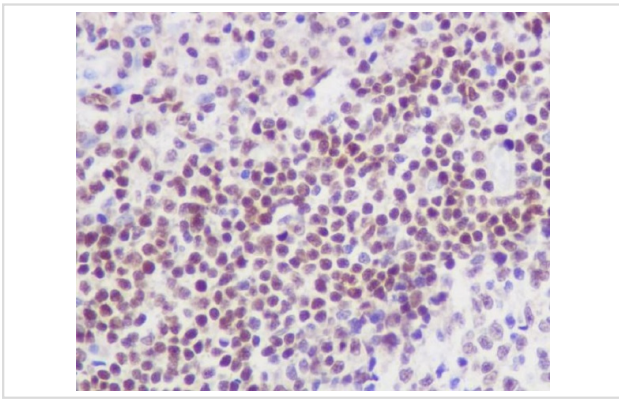
## Application Details

WB 1:500~1:2000 IHC 1:100~1:500

## Images



Western blot analysis of FLI1 expression in Jurkat cell lysate.



Immunohistochemical analysis of paraffin-embedded human tonsil, using FLI1 Antibody .

## Product Description

FLI1 Sequence-specific transcriptional activator. Recognizes the DNA sequence 5'-C[CA]GGAAGT-3'. Belongs to the ETS family. Can form homodimers or heterodimers with ETV6/TEL1. 2 isoforms of the human protein are produced by alternative splicing.

## Background

FLI1 Sequence-specific transcriptional activator. Recognizes the DNA sequence 5'-C[CA]GGAAGT-3'. Belongs to the ETS family. Can form homodimers or heterodimers with ETV6/TEL1. 2 isoforms of the human protein are produced by alternative splicing.

Note: This product is for in vitro research use only