

DYNLL1 Rabbit mAb

Catalog No: #58867

Package Size: #58867-1 50ul #58867-2 100ul

Orders: order@signalwayantibody.com

Support: tech@signalwayantibody.com

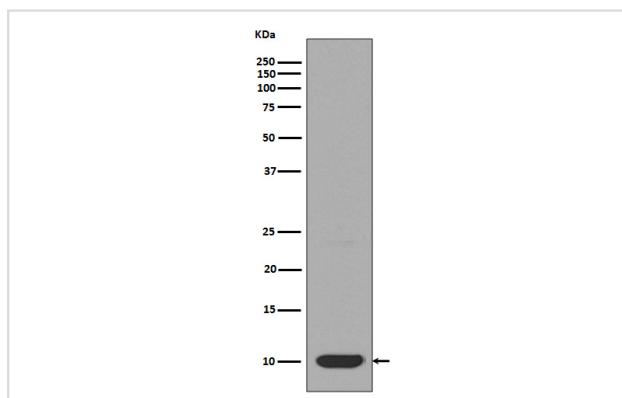
Description

Product Name	DYNLL1 Rabbit mAb
Host Species	Rabbit
Clonality	Monoclonal
Isotype	Rabbit IgG
Purification	Affinity-chromatography
Applications	WB IHC ICC/IF IP
Species Reactivity	Human Mouse Rat
Specificity	DYNLL1 Antibody detects endogenous levels of total DYNLL1
Immunogen Description	A synthesized peptide derived from human DYNLL1
Other Names	DLC8; DLC1; DNCL1; DYNLL1; HDLC1; LC8a; PIN;
Accession No.	Uniprot:P63167
Uniprot	P63167
Calculated MW	10kDa
Formulation	Rabbit IgG in phosphate buffered saline , pH 7.4, 150mM NaCl, 0.02% sodium azide and 50% glycerol.
Storage	Store at +4°C short term. Store at -20°C long term. Avoid freeze / thaw cycle.

Application Details

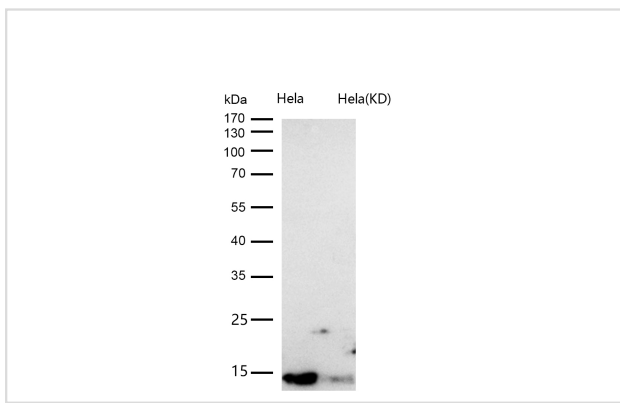
WB 1:500~1:2000 IHC 1:50~1:200 ICC/IF 1:50~1:200 IP 1:50

Images



Western blot analysis of DYNLL1 expression in HeLa cell lysate.

All lanes use the Antibody at 1:1K dilution for 1 hour at room temperature.



Product Description

Acts as one of several non-catalytic accessory components of the cytoplasmic dynein 1 complex that are thought to be involved in linking dynein to cargos and to adapter proteins that regulate dynein function. Cytoplasmic dynein 1 acts as a motor for the intracellular retrograde motility of vesicles and organelles along microtubules. May play a role in changing or maintaining the spatial distribution of cytoskeletal structures.

Background

Acts as one of several non-catalytic accessory components of the cytoplasmic dynein 1 complex that are thought to be involved in linking dynein to cargos and to adapter proteins that regulate dynein function. Cytoplasmic dynein 1 acts as a motor for the intracellular retrograde motility of vesicles and organelles along microtubules. May play a role in changing or maintaining the spatial distribution of cytoskeletal structures.

Note: This product is for in vitro research use only