

Cytokeratin 16 Rabbit mAb

Catalog No: #58869

Package Size: #58869-1 50ul #58869-2 100ul

Orders: order@signalwayantibody.com

Support: tech@signalwayantibody.com

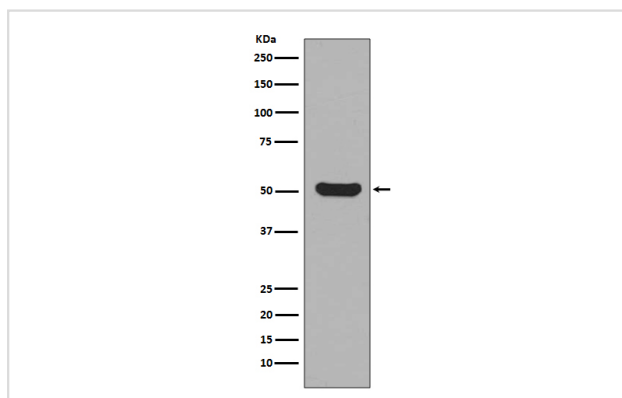
Description

Product Name	Cytokeratin 16 Rabbit mAb
Host Species	Rabbit
Clonality	Monoclonal
Isotype	Rabbit IgG
Purification	Affinity-chromatography
Applications	WB IHC ICC/IF FC
Species Reactivity	Human
Specificity	Cytokeratin 16 Antibody detects endogenous levels of total Cytokeratin 16
Immunogen Description	A synthesized peptide derived from human Cytokeratin 16
Other Names	CK-16; CK16; cytokeratin 16; Cytokeratin-16; FNEPPK; K16; K1C16; K1CP; keratin 16; Keratin-16; KRT16; KRT16A; NEPPK;
Accession No.	Uniprot:P08779
Uniprot	P08779
Formulation	Rabbit IgG in phosphate buffered saline , pH 7.4, 150mM NaCl, 0.02% sodium azide and 50% glycerol.
Storage	Store at +4°C short term. Store at -20°C long term. Avoid freeze / thaw cycle.

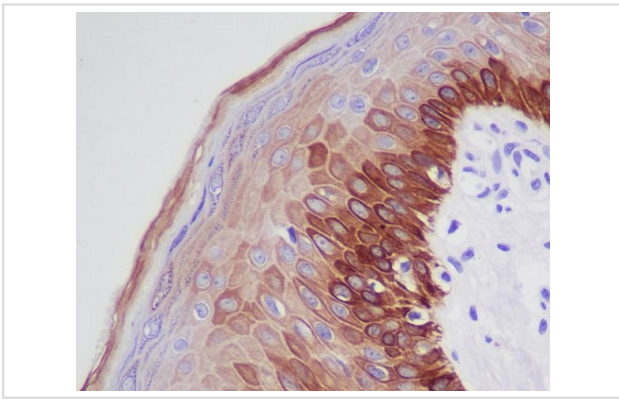
Application Details

WB 1:1000~1:2000 IHC 1:50~1:200 ICC/IF 1:50~1:200 FC 1:50

Images



Western blot analysis of Cytokeratin 16 expression in HaCat cell lysate.



Immunohistochemical analysis of paraffin-embedded human skin, using Cytokeratin 16 Antibody.

Product Description

K16 a type I cytoskeletal keratin. The keratins are intermediate filament proteins responsible for the structural integrity of epithelial cells and are subdivided into cytokeratins and hair keratins. There are two types of cytoskeletal and microfibrillar keratin: type I (acidic; 40-55 kDa) [K9 to K20] and type II (neutral to basic; 56-70 kDa) [K1 to K8].

Background

K16 a type I cytoskeletal keratin. The keratins are intermediate filament proteins responsible for the structural integrity of epithelial cells and are subdivided into cytokeratins and hair keratins. There are two types of cytoskeletal and microfibrillar keratin: type I (acidic; 40-55 kDa) [K9 to K20] and type II (neutral to basic; 56-70 kDa) [K1 to K8].

Note: This product is for in vitro research use only